

Note: Dimensions are nominal measurements only

SPECIFICATIONS

RECOMMENDED USE

Domestic

MATERIAL

Pan: Glazed Porcelain
 Seat: Soft close - Hardened Polypropylene (PP)

INSTALLATION

Floor Mounted

SET-IN

105-180mm *see next page for details

TEMPERATURE RATING

Maximum continuous working temperature 75°C
 If the water temperature exceeds 75°C, an approved tempering valve must be fitted

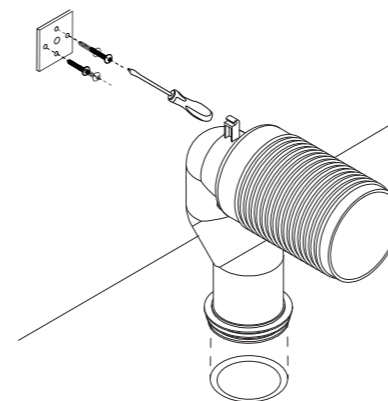
STANDARDS

WELS: 4 star, Full Flush: 4.7L, Half Flush: 3.0L, Average Flush: 3.4L, L07269, WMK25988, AS 1172.2:2014

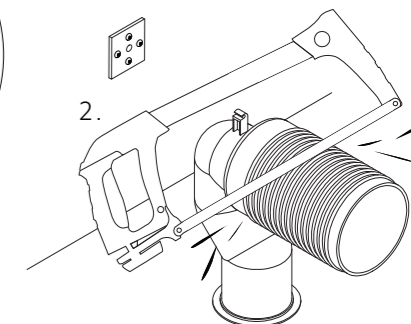
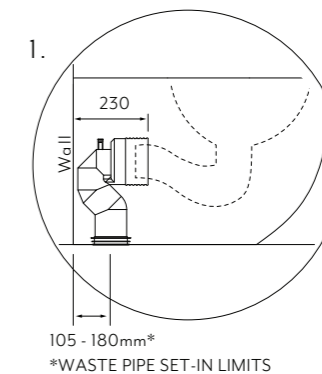
INSTALLATION GUIDE

Note: This product must be installed by a licensed tradesperson. This is a general installation guide - there are many factors that are involved that can alter the installation method. The standards in your respective country must be adhered to by your licensed tradesperson

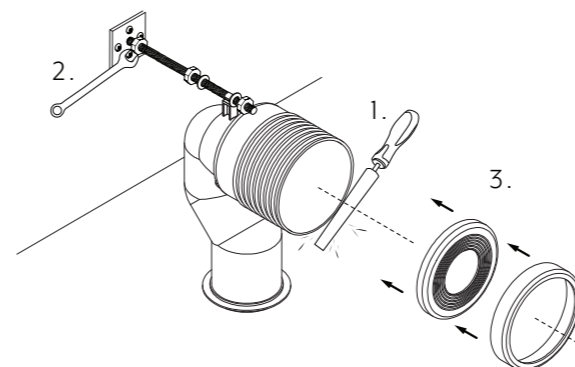
1. Align S trap adaptor and fix wall bracket
Note: Use appropriate fixings according to wall finish.



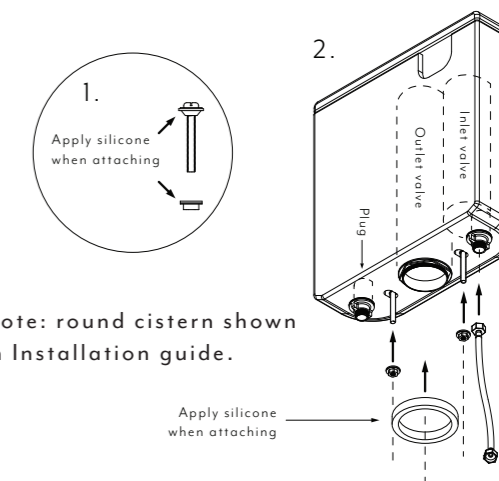
2. 1. Measure *230±2mm from the wall to waste pipe end *Please check this dimension yourself.
 2. Use a saw to cut the pipe.



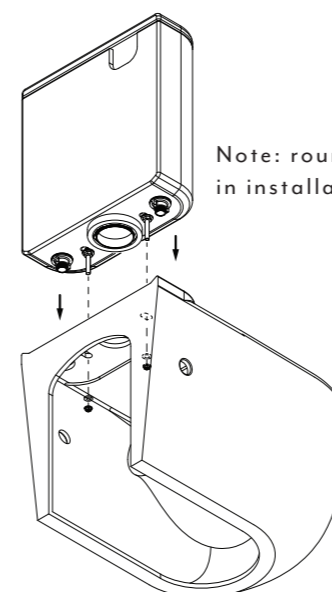
3. 1. File edges of S trap adapter.
 2. Using a spanner fasten threaded rod to the wall plate and the S trap.
 3. Place pan collar onto S trap adapter.



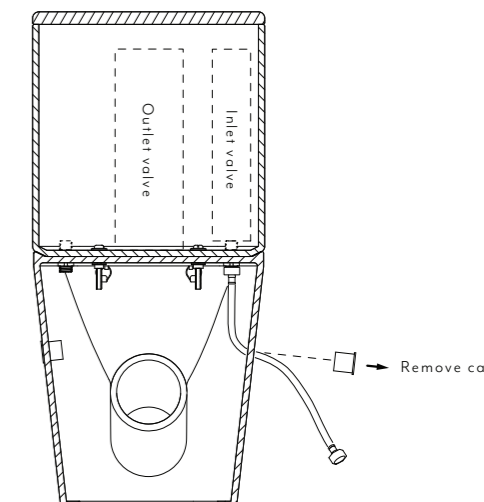
4. 1. Apply silicone to the bolts and washers.
 2. Attach the bolts, rubber seal and flexi hose



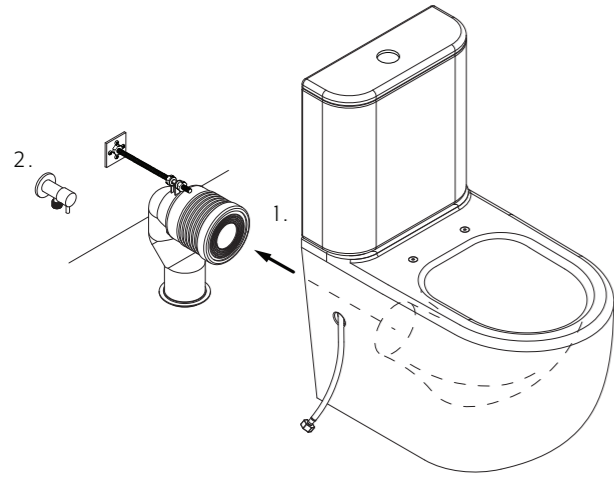
5. Align and bolt the cistern to the pan.



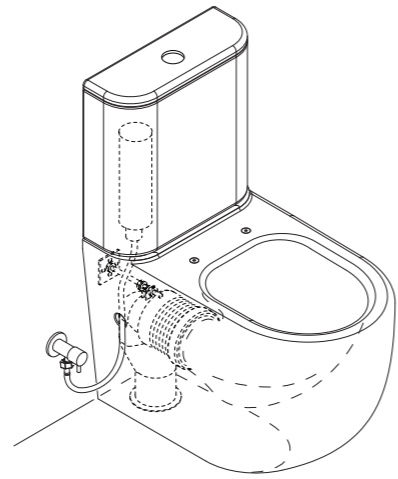
6. Remove cap and push flexi hose through the side of pan.



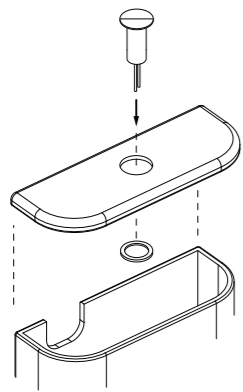
7 Push toilet back, ensure waste pipe aligns.



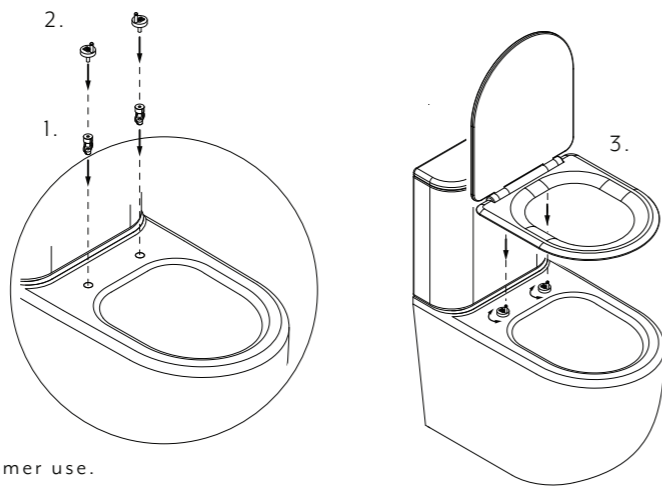
8 Connect flexi hose to wall outlet. Test and flush for leaks.



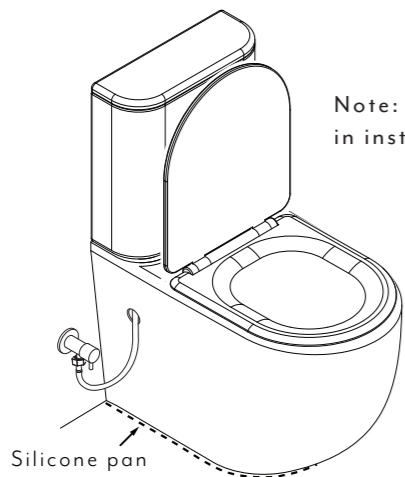
9 Attach flush button to cistern lid.



10 1. Push expansion plugs into pan holes.
2. Use a screwdriver to attach hinges.
3. Adjust hinges and push seat on



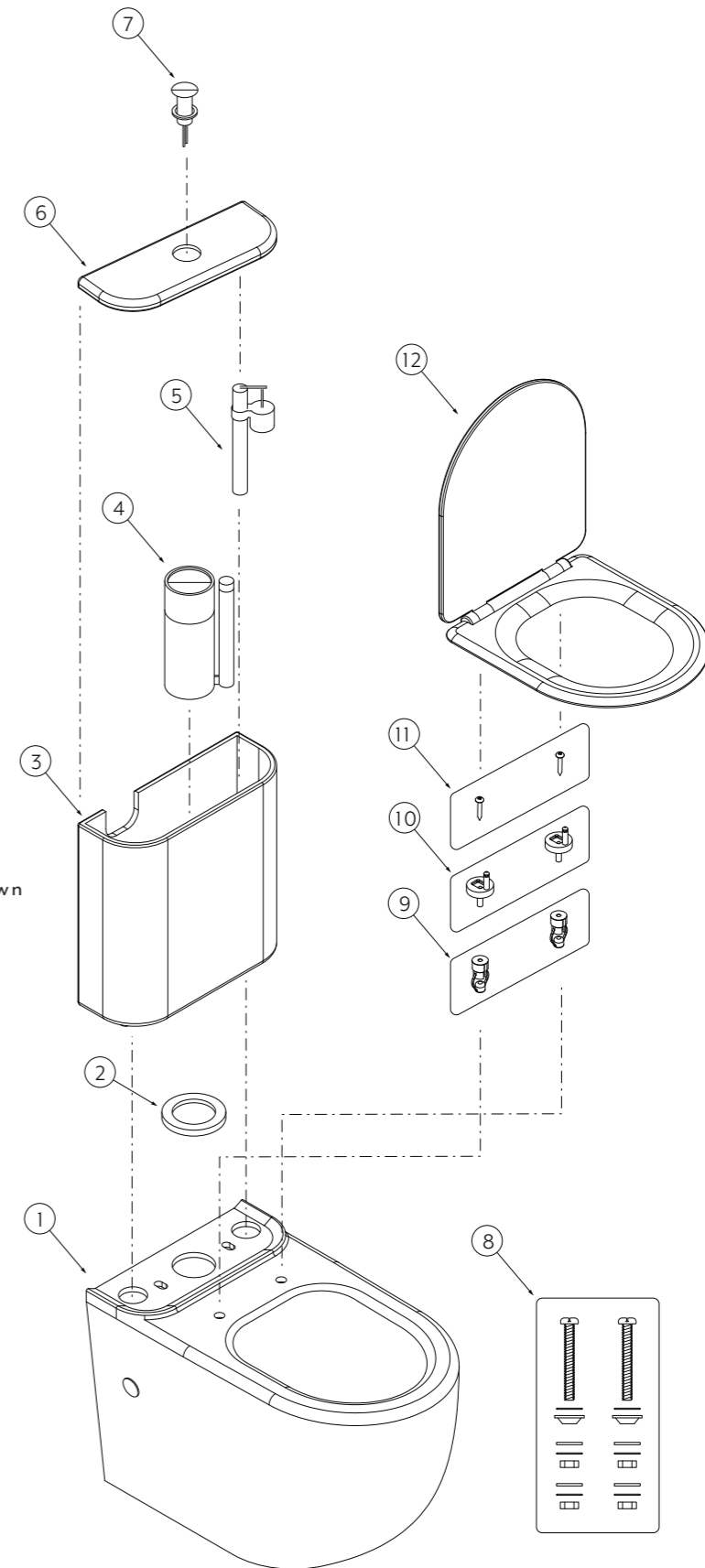
11 1. Always test and commission before customer use.
2. Silicone pan.



Note: round cistern shown in installation guide.

Parts list

1. Pan
2. Foam washer
3. Cistern
4. Outlet valve
5. Inlet valve
6. Cistern lid
7. Flush buttons
8. Pan Bolt set [x2]
9. Expansion plug [x2]
10. Hinges [x2]
11. Screws [x2]
12. Seat [x2]



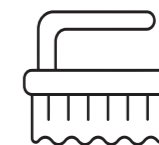
Note: round cistern shown in installation guide.



Regularly clean with mild liquid detergent or soap and water



DO NOT use cream cleaners or bleach. These substances are abrasive



DO NOT use cleaning pads with abrasive surfaces as this may scratch the material