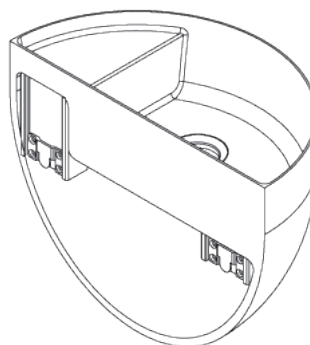
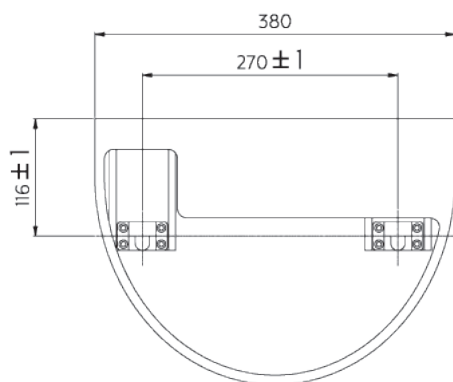


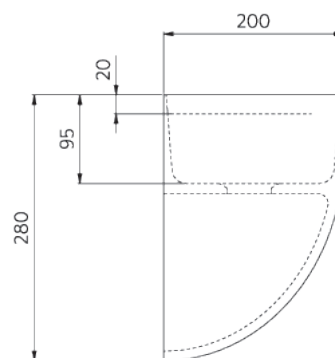
TOP VIEW



ISOMETRIC VIEW



BACK VIEW



SIDE VIEW

Note: Dimensions are nominal measurements only

SPECIFICATIONS

RECOMMENDED USE

Domestic

COLOUR AVAILABILITY

Matte White

MATERIAL

Solid Surface

INSTALLATION

Wall Mounted
*To be used with a bench mounted mixer or a spout

OVERFLOW

N/A

WASTE

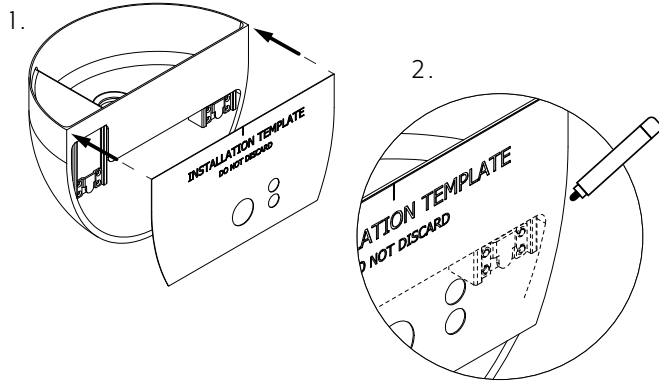
Concealed Waste

INSTALLATION GUIDE

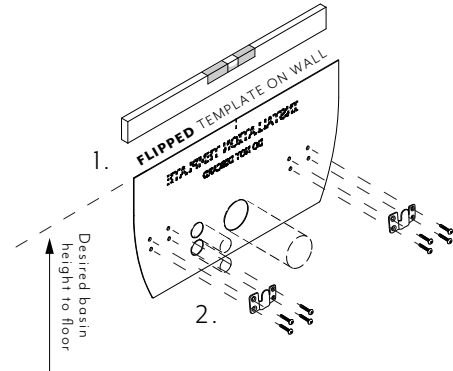
This product must be installed by a licensed tradesperson
This is a general installation guide - there are many factors that are involved that can alter the installation method.



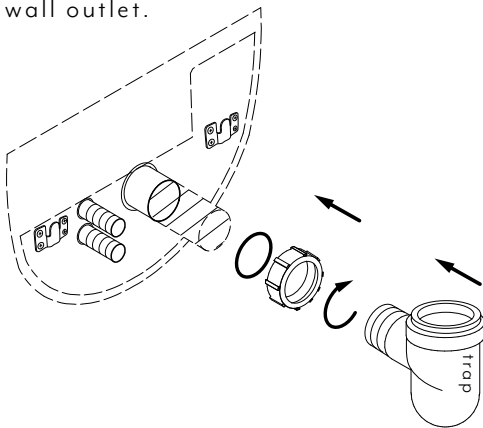
- ① Mark your template.
 1. Align template over the basin (as shown).
Ensure tops edges are level.
 2. Mark the bracket screw centres



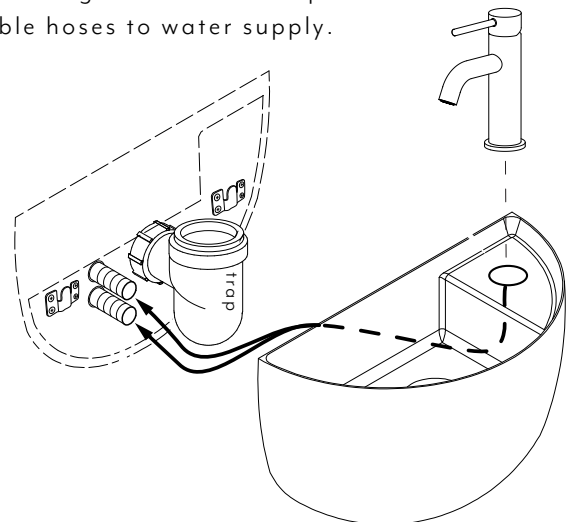
- ②
 1. FLIP and place the template in the desired location on the wall. Use a level to aid, mark the hole centres.
 2. Remove template and attach the brackets using the appropriate fixing screws.



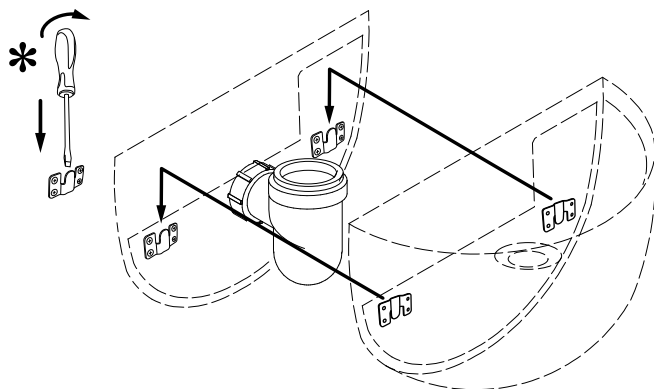
- ③ Allow 45mm pipe projection from finished wall material. Secure micro trap provided to wall outlet.



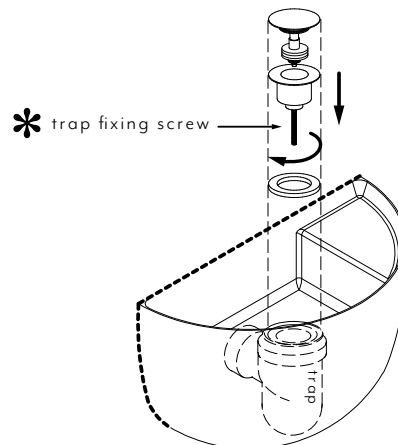
- ④ If mounting basin mixer or spout attach flexible hoses to water supply.



- ④ Push and lower basin into mounted position.
***Note:** If brackets are not locking into place, open bracket by flexing the tongue with a screwdriver.



- ⑤ Fit top section of pop up waste to trap of basin waste. ***Note:** Use trap fixing screw for pop up waste installation. Test by running water through the waste and pushing plug down. Silicon inner perimeter of basin.



IN THE BOX	
	1 x basin
	1 x template
	1 x trap
	2 x brackets
	8 x screws