

Note: Dimensions are nominal measurements only

SPECIFICATIONS

RECOMMENDED USE

Domestic

MATERIAL

Solid Brass

TEMPERATURE RATING

Maximum continuous working temperature 75°C
If the water temperature exceeds 75°C, an approved tempering valve must be fitted

PRESSURE RATING

Recommended minimum working pressure 150kPa
Recommended maximum working pressure 500kPa
Hot and cold water inlet pressure should be equal

STANDARDS

Recommended minimum working pressure 150kPa
Recommended maximum working pressure 500kPa
Hot and cold water inlet pressure should be equal

Disclaimer: Products in this specification manual must by regulation be installed by licensed and registered trade people. The manufacturer/distributor reserves the right to vary specifications or delete models from their range without prior notification. Dimensions are nominal measurements only. Dimensions and set-outs listed are correct at time of publication however the manufacturer/distributor takes no responsibility for printing errors. All ABI Products are designed in Australia. Copyright ABI Interiors 2022. WWW.ABIINTERIORS.COM.AU

INSTALLATION GUIDE

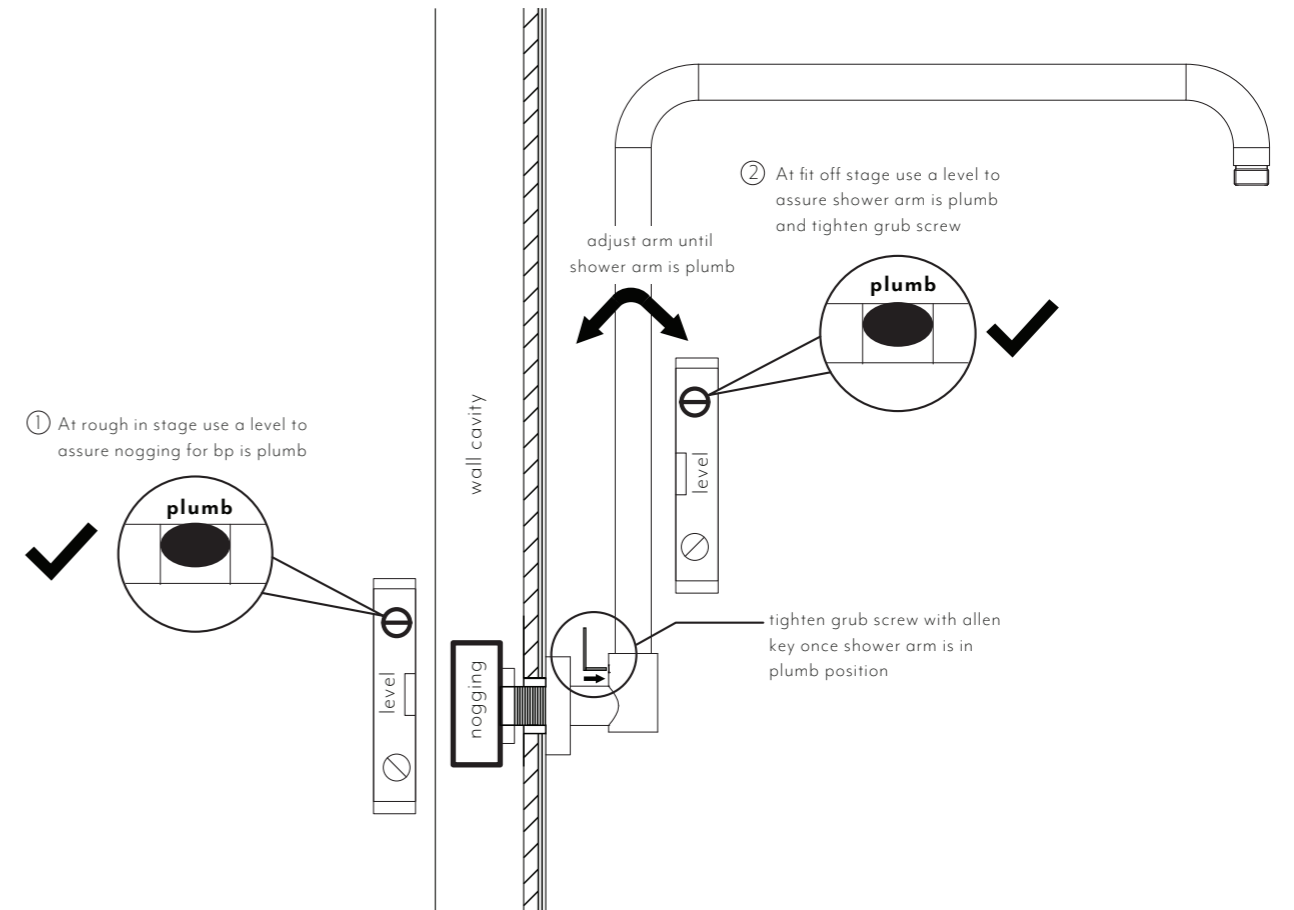
This product must be installed by a licensed tradesperson.

This is a general installation guide - there are many factors that are involved that can alter the installation method.

This product install must comply with AS/NZS 3500.

- 1) Check that the male brass thread installed in the wall is the correct length. Cut to length if required ensuring end face is square. Apply thread tape to the thread.
- 2) Slide the cover plate onto the arm. Carefully screw the arm onto the brass thread until the threaded end is adjacent to the wall/tile or ceiling face and the outlet is facing down. Do not tighten and be careful not to damage the decorative finish. Push the cover plate until it meets the wall/ceiling face.
- 3) Refer to individual product guide for installation of shower head.

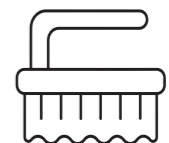
Note: To ensure the shower head is plumb please see the following instructions below;



Regularly clean with mild liquid detergent or soap and water



DO NOT use cream cleaners or bleach. These substances are abrasive



DO NOT use cleaning pads with abrasive surfaces as this may scratch the material