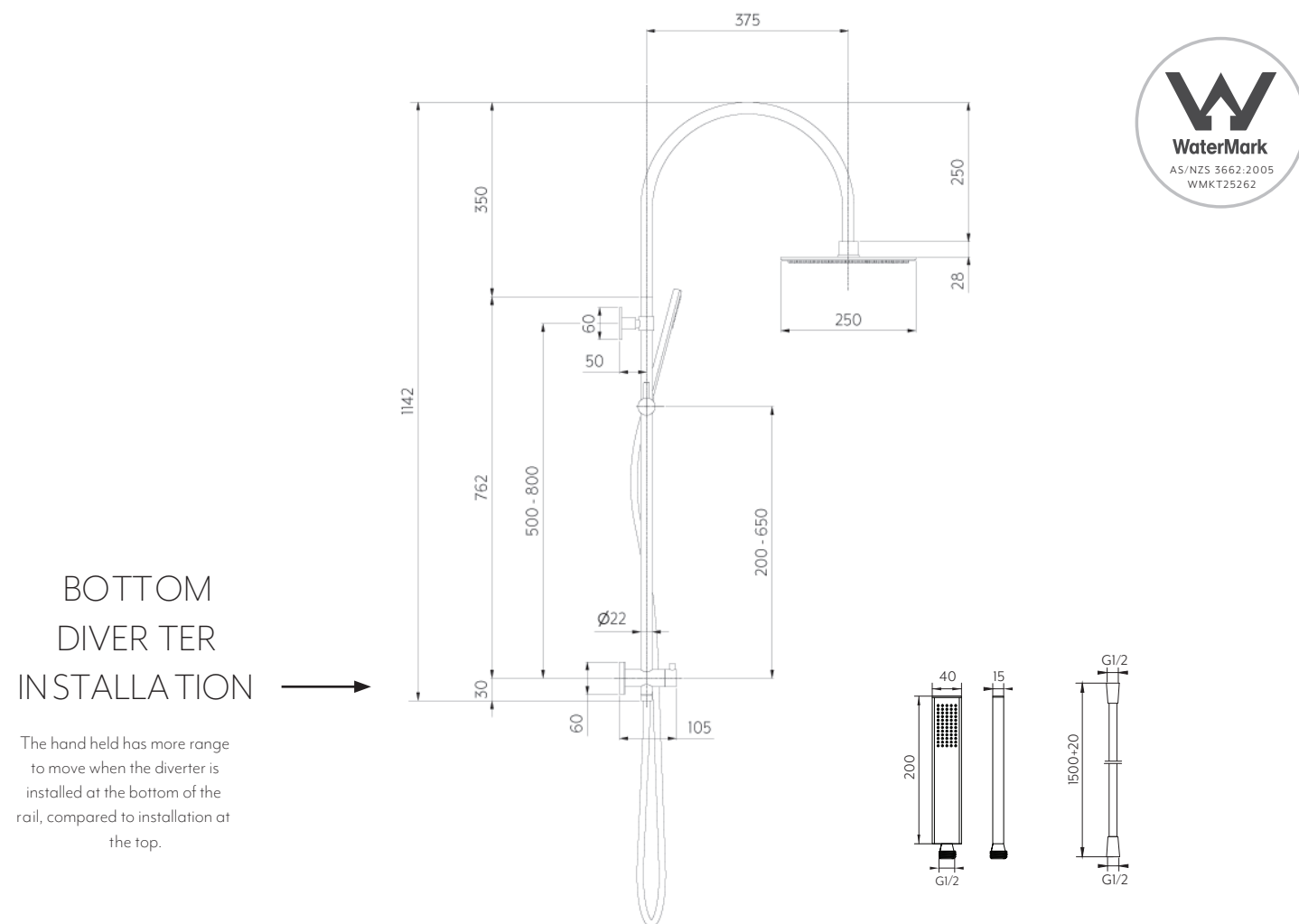


ELYSIAN GOOSENECK SHOWER SET



Note: Dimensions are nominal measurements only

SPECIFICATIONS


RECOMMENDED USE	Domestic
MATERIAL	Solid Brass
PRESSURE RATING	Recommended minimum working pressure 150kPa Recommended maximum working pressure 500kPa Hot and cold water inlet pressure should be equal
TEMPERATURE RATING	Maximum continuous working temperature 75°C If the water temperature exceeds 75°C, an approved tempering valve must be fitted
SUITABLE HOT WATER UNITS	Storage tank: Yes Continuous Flow: Yes Gravity Feed: Not suitable
FUNCTIONS	Standard rain shower spray
STANDARDS	WELS Star Rating 3 star - Flow Rate: 8.5L/min (with Kobi) SI6411, WMKT25262

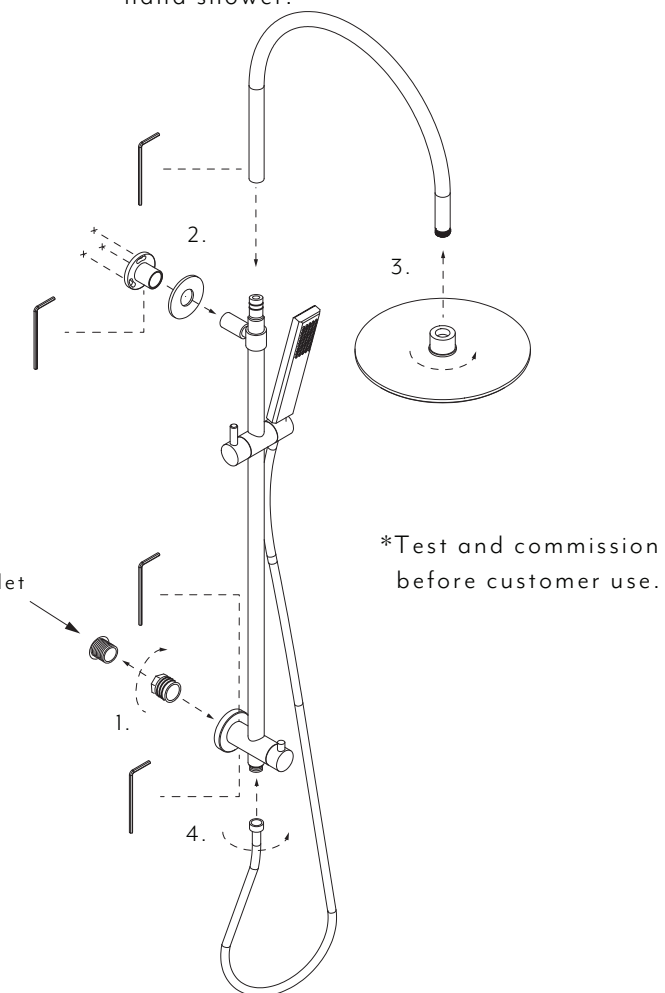
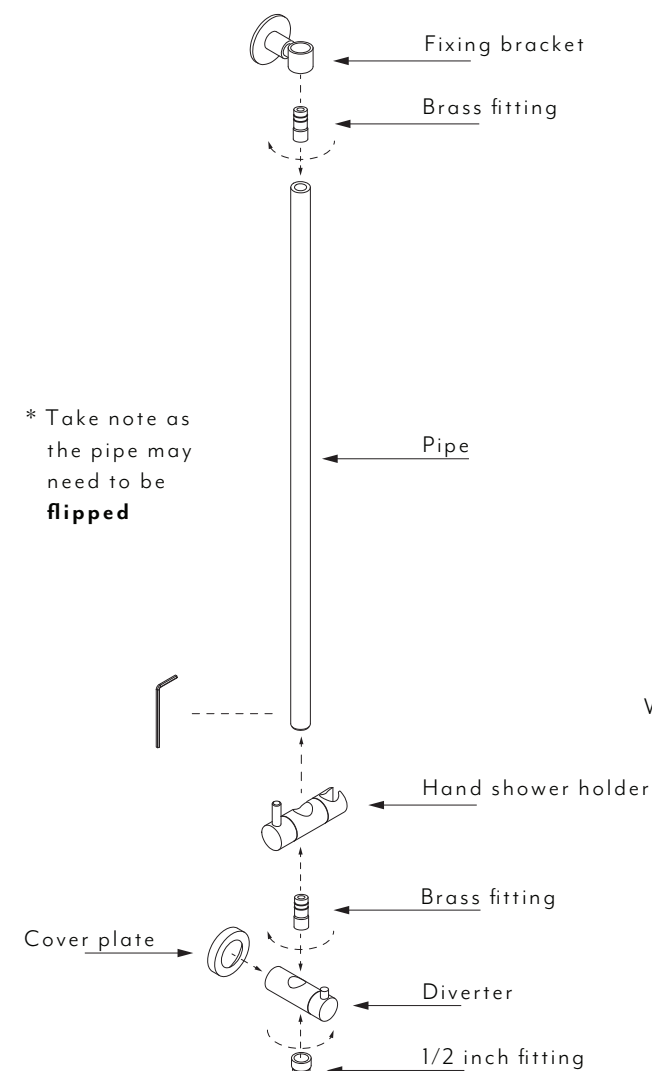
Disclaimer: Products in this specification manual must by regulation be installed by licensed and registered trade people. The manufacturer/distributor reserves the right to vary specifications or delete models from their range without prior notification. Dimensions are nominal measurements only. Dimensions and set-outs listed are correct at time of publication however the manufacturer/distributor takes no responsibility for printing errors. All ABI Products are designed in Australia. Copyright ABI Interiors Pty Ltd 2021.

INSTALLATION GUIDE

Note: This product must be installed by a licensed plumber.

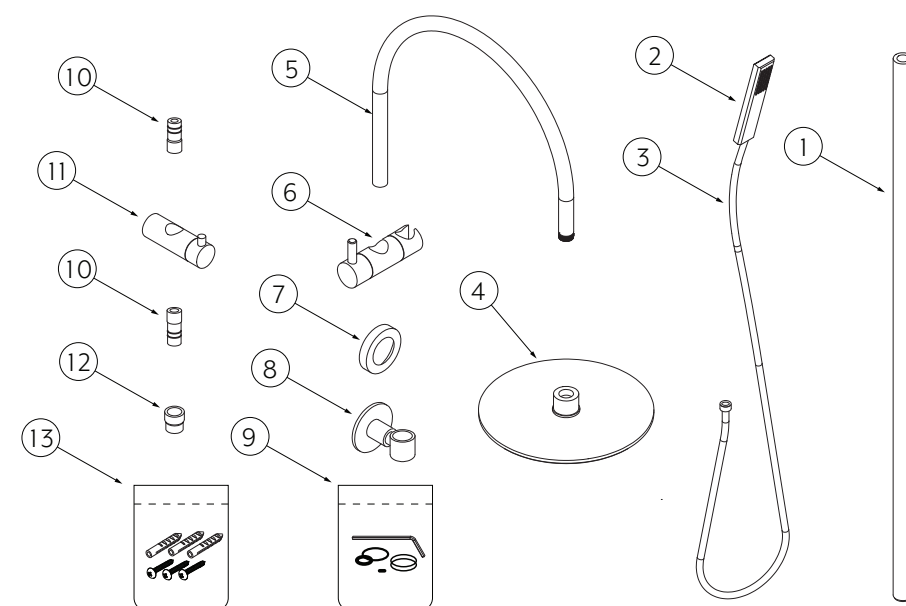
This is a general installation guide - there are many factors that are involved that can alter the installation method. This product install must comply with AS/NZS 3500

- 1 Assemble the following parts in the layout shown below. Ensure each part is secured by tightening each fitting with an allen key.
 - 2
 1. Connect to water outlet. Use appropriate thread sealant
 2. Mark and fix pipe holder brackets.
 3. Before attaching spout and shower head run the water through to clear pipe of debris.
 4. Connect shower hose, run water through hose to clear any debris then attach hand shower.



What's in the box?

1. Pipe
2. Hand shower
3. Hose
4. Shower head
5. Gooseneck
6. Hand shower holder
7. Cover plate
8. Fixing bracket
9. Spare parts
10. Brass fitting [x2] *these may be attached to diverter.
11. Diverter
12. 1/2 Inch fitting
13. Fixing screws

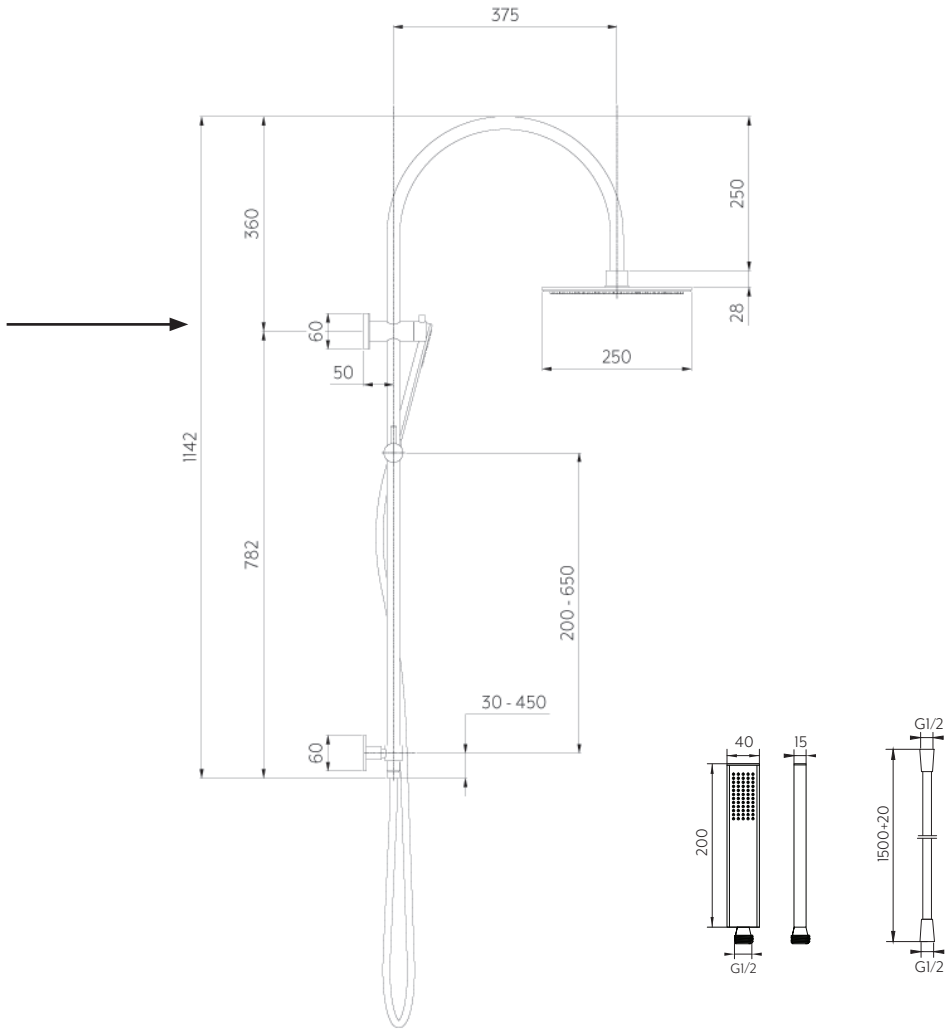




ELYSIAN GOOSENECK SHOWER SET

TOP DIVER TER INSTALLATION

Please keep in mind, top diverter installation can limit the hand held movement along the rail.



Note: Dimensions are nominal measurements only

SPECIFICATIONS

RECOMMENDED USE

Domestic

MATERIAL

Solid Brass

PRESSURE RATING

Recommended minimum working pressure 150kPa
Recommended maximum working pressure 500kPa
Hot and cold water inlet pressure should be equal

TEMPERATURE RATING

Maximum continuous working temperature 75°C
If the water temperature exceeds 75°C, an approved tempering valve must be fitted

SUITABLE HOT WATER UNITS

Storagetank: Yes
Continuous Flow: Yes
Gravity Feed: Not suitable

FUNCTIONS

Standard rain shower spray

STANDARDS

WELS Star Rating 3 star - Flow Rate: 8.5L/min (with Kobi)
S16411, WMKT25262

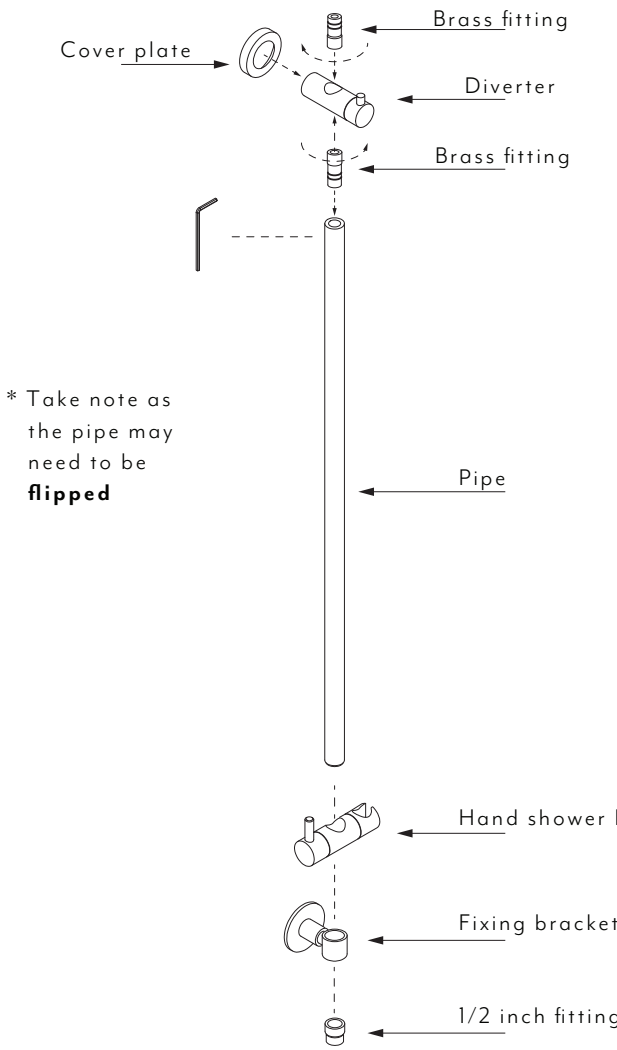
Disclaimer: Products in this specification manual must by regulation be installed by licensed and registered trade people. The manufacturer/distributor reserves the right to vary specifications or delete models from their range without prior notification. Dimensions are nominal measurements only. Dimensions and set-outs listed are correct at time of publication however the manufacturer/distributor takes no responsibility for printing errors. All ABI Products are designed in Australia. Copyright ABI Interiors Pty Ltd 2021.

INSTALLATION GUIDE

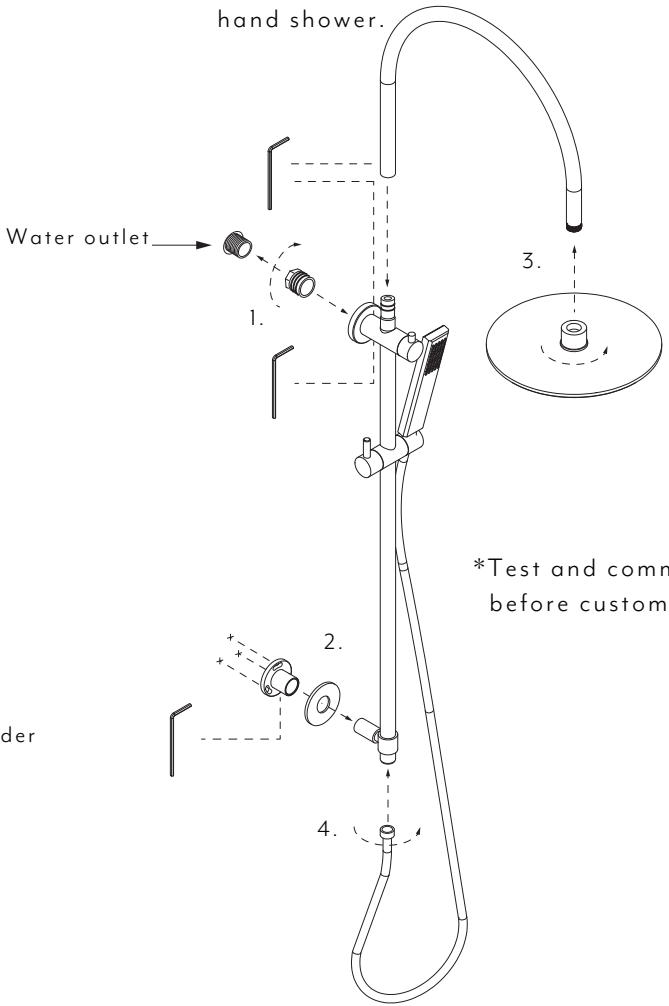
Note: This product must be installed by a licensed plumber.

This is a general installation guide - there are many factors that are involved that can alter the installation method. This product install must comply with AS/NZS 3500

- 1 Assemble the following parts in the layout shown below. Ensure each part is secured by tightening each fitting with an alan key.



- 2 1. Connect to water outlet. Use appropriate thread sealant.
2. Mark and fix pipe holder brackets.
3. Before attaching spout and shower head run the water through to clear pipe of debris.
4. Connect shower hose, run water through hose to clear any debris then attach hand shower.



What's in the box?

- Pipe
- Hand shower
- Hose
- Shower head
- Gooseneck
- Hand shower holder
- Cover plate
- Fixing bracket
- Spare parts
- Brass fitting [x2] *these may be attached to diverter.
- Diverter
- 1/2 Inch fitting
- Fixing screws

