

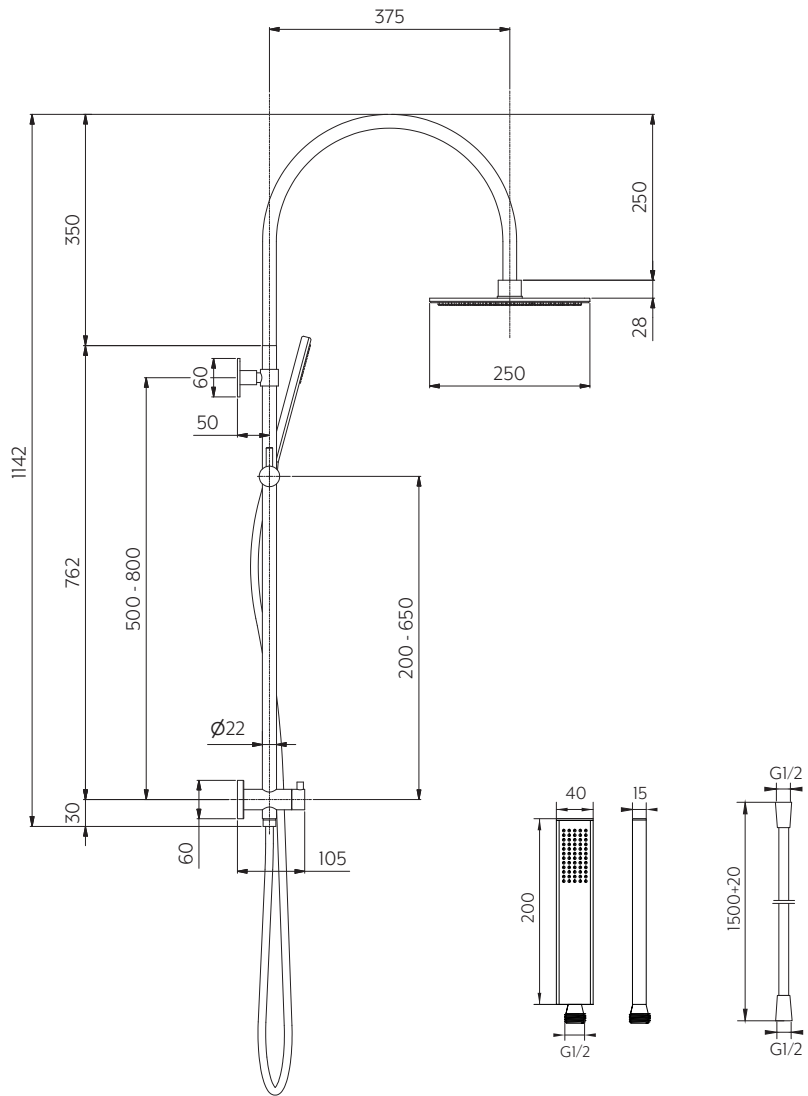


# ELYSIAN GOOSENECK SHOWER SET



## BOTTOM DIVERTER INSTALLATION

The hand held has more range to move when the diverter is installed at the bottom of the rail, compared to installation at the top.



SIDE VIEW

**Note:** Dimensions are nominal measurements only

## SPECIFICATIONS

### RECOMMENDED USE

Domestic

### PRESSURE RATING

Recommended minimum working pressure 150kPa  
Recommended maximum working pressure 500kPa  
Hot and cold water inlet pressure should be equal

### TEMPERATURE RATING

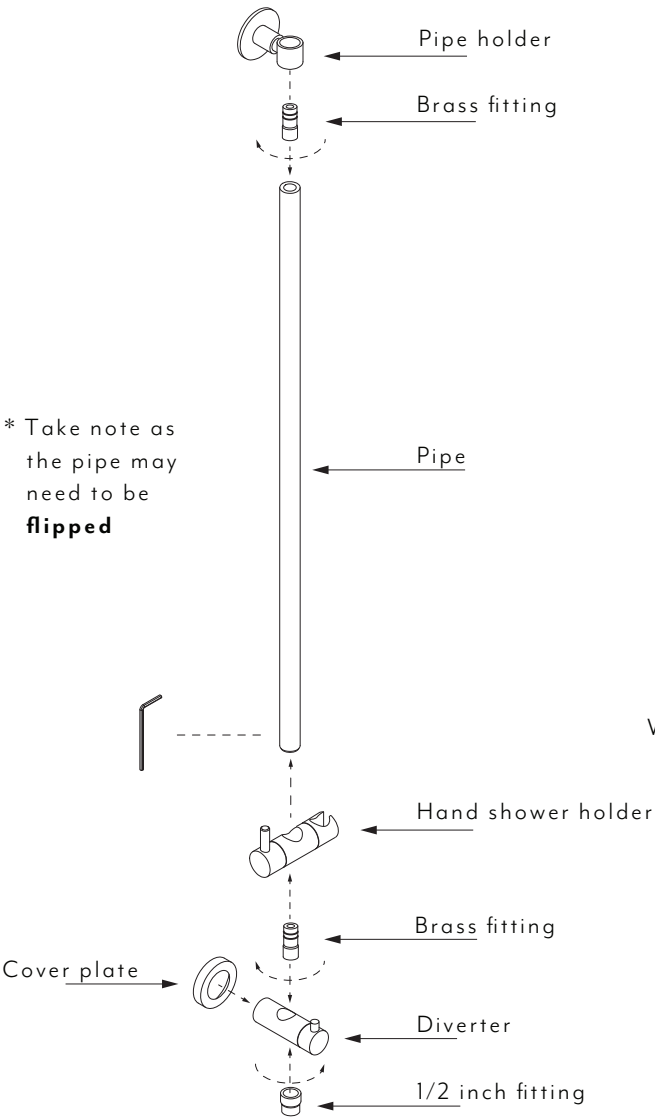
Maximum continuous working temperature 75°C  
If the water temperature exceeds 75°C, an approved tempering valve must be fitted

Disclaimer: Products in this specification manual must by regulation be installed by licensed and registered trade people. The manufacturer/distributor reserves the right to vary specifications or delete models from their range without prior notification. Dimensions are nominal measurements only. Dimensions and set-outs listed are correct at time of publication however the manufacturer/distributor takes no responsibility for printing errors. All ABI Products are designed in Australia. Copyright ABI Interiors Pty Ltd 2021.

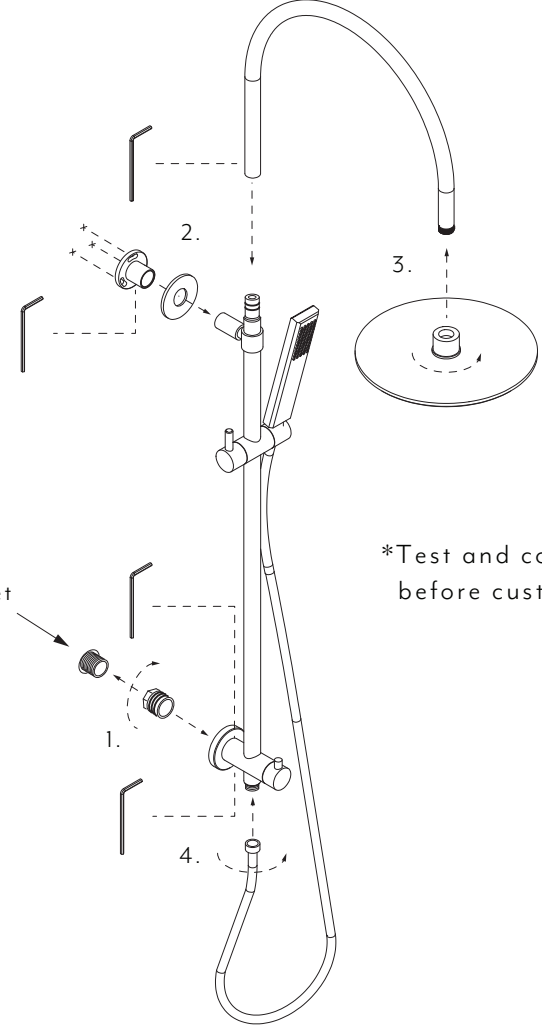
# ELYSIAN GOOSENECK SHOWER SET INSTALLATION MANUAL

INSTALLATION FOR DIVERTER AT THE BOTTOM

- 1 Assemble the following parts in the layout shown below. Ensure each part is secured by tightening each fitting with an alan key.



- 2 1. Connect to water outlet. Use appropriate threat sealant  
2. Mark and fix pipe holder brackets.  
3. Before attaching spout and shower head run the water through to clear pipe of debris.  
4. Connect shower hose, run water through hose to clear any debris then attach hand shower.



## What's in the box?

1. Pipe
2. Hand shower
3. Hose
4. Shower head
5. Goose neck
6. Hand shower holder
7. Cover plate
8. Fixing bracket
9. Spare parts
10. Brass fitting [x2] \*these may be attached to diverter.
11. Diverter
12. 1/2 Inch fitting
13. Fixing screws

