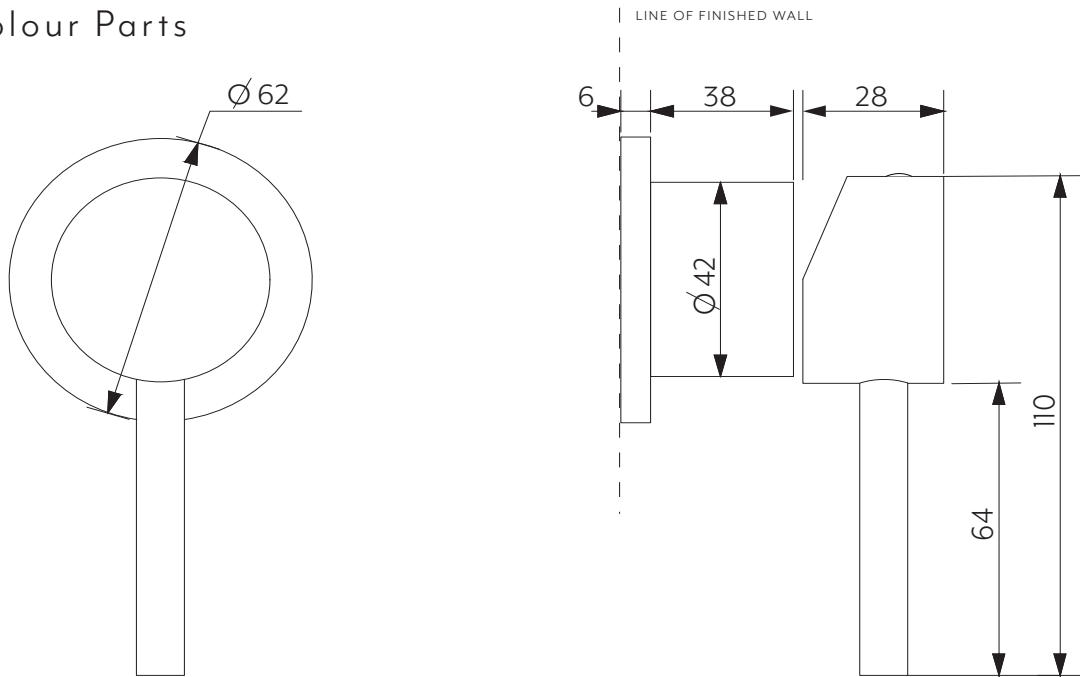


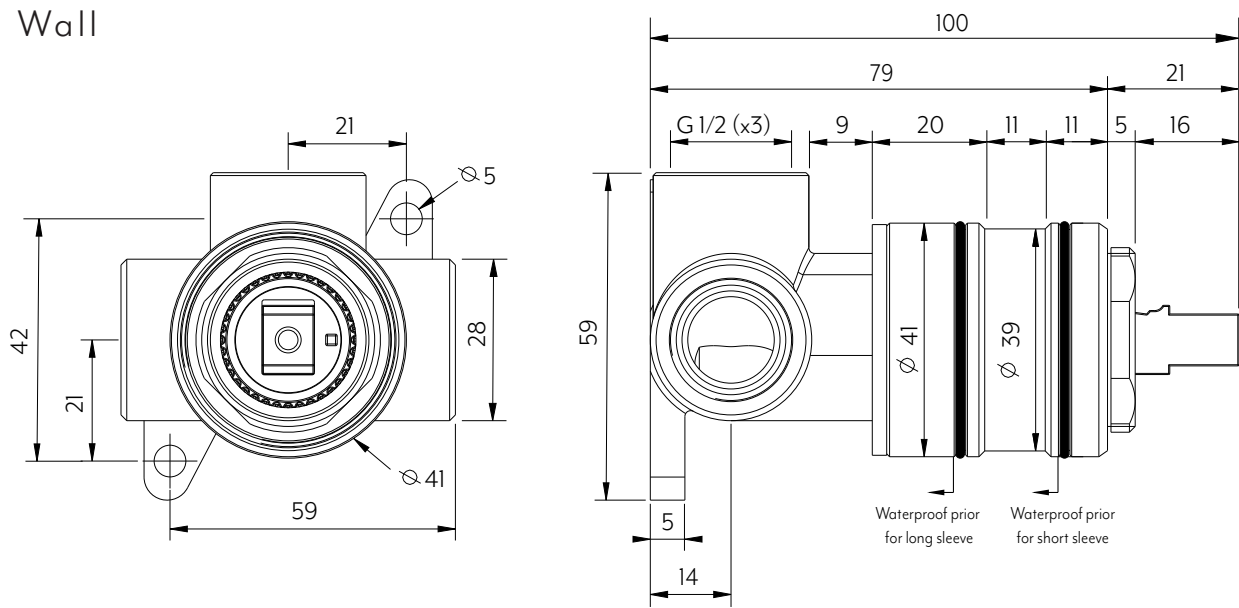


# ELYSIAN MINIMAL HANDLE SET

## Just Colour Parts



## In Wall



Disclaimer: To achieve infiniti (interchangeable sleeves) waterproofing can not exceed past sleeve B.

**Note:** Dimensions are nominal measurements only

## SPECIFICATIONS

RECOMMENDED USE	Domestic
-----------------	----------

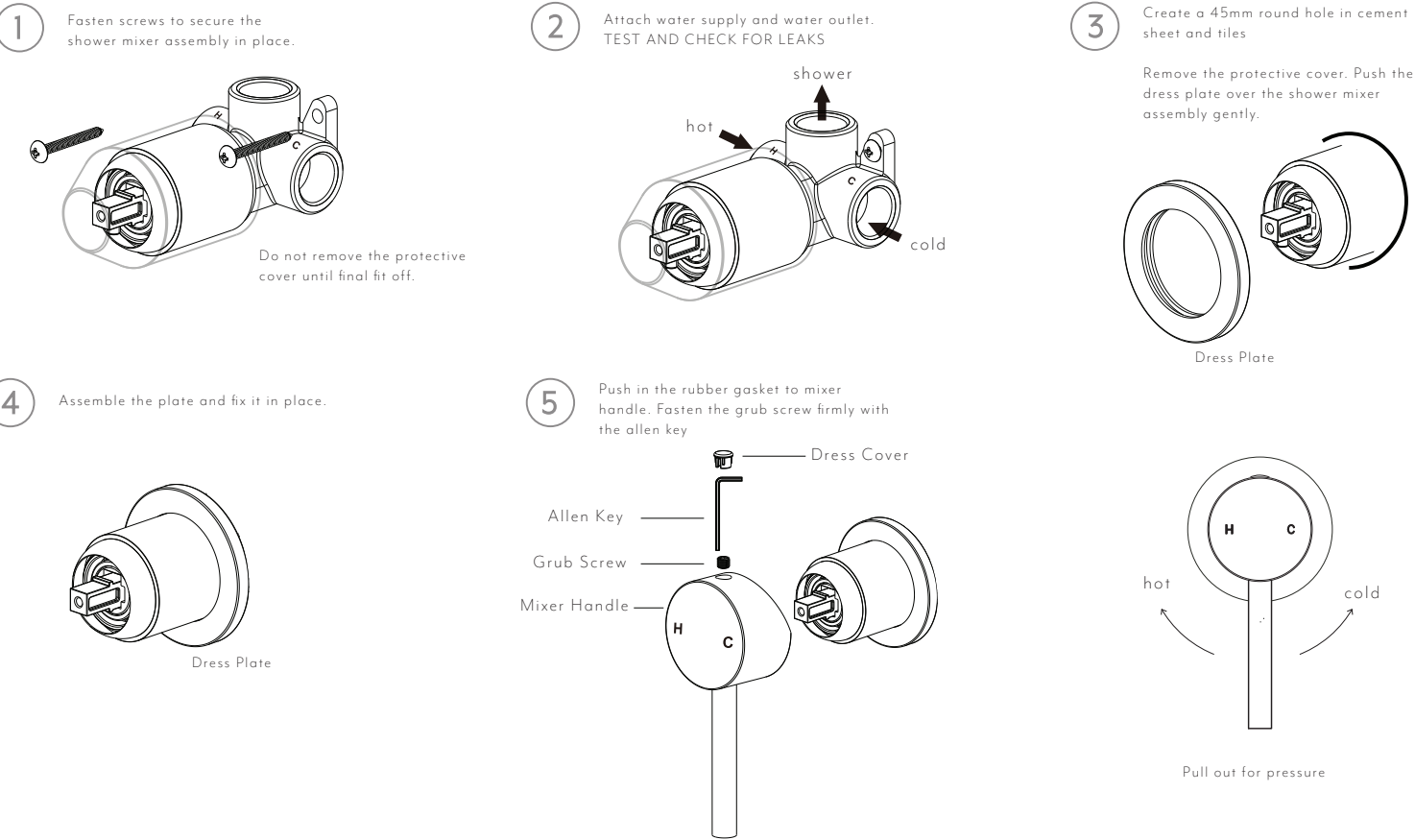
CONSTRUCTION	Solid Brass
--------------	-------------

Disclaimer: Products in this specification manual must by regulation be installed by licensed and registered trade people. The manufacturer/distributor reserves the right to vary specifications or delete models from their range without prior notification. Dimensions are nominal measurements only. Dimensions and set-outs listed are correct at time of publication however the manufacturer/distributor takes no responsibility for printing errors. All ABI Products are designed in Australia. Copyright ABI Interiors Pty Ltd 2021.



## INSTALLATION GUIDE

Note: This product must be installed by a licensed plumber.  
This is a general installation guide - there are many factors that are involved that can alter the installation method.

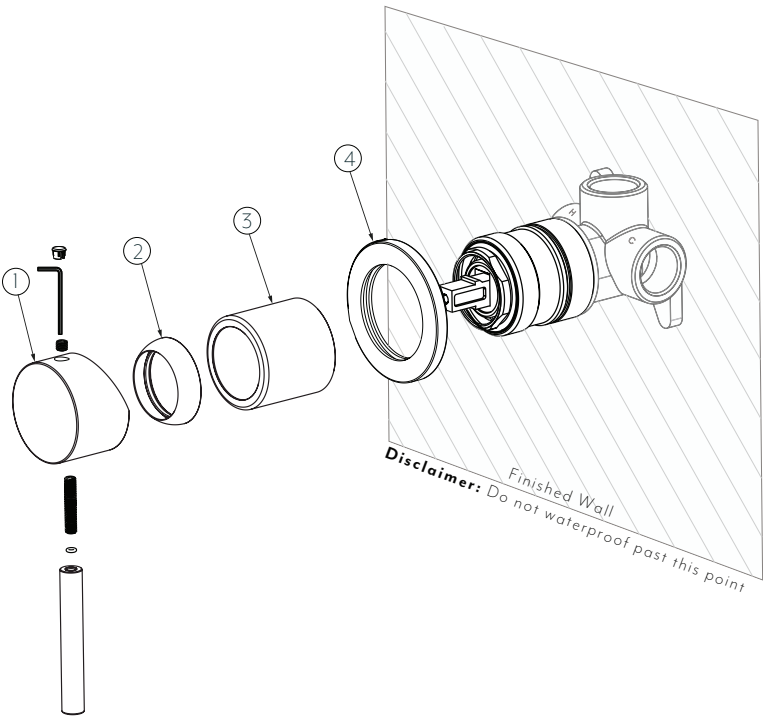


## WHATS IN THE BOX

### EXPLODED VIEW

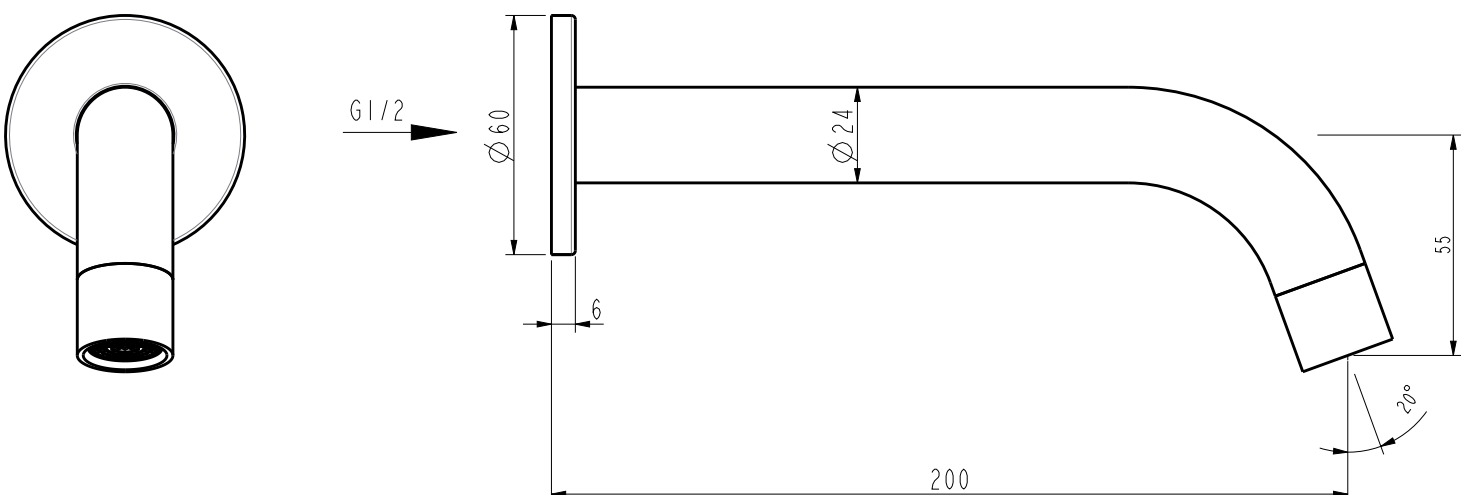
Item Description Code

- 1 Handle
- 2 Dome
- 3 Sleeve
- 4 Back Plate





# WALL MOUNTED SPOUT



**Note:** Dimensions are nominal measurements only

## SPECIFICATIONS

### RECOMMENDED USE

Domestic

### CONSTRUCTION

Solid Brass

### TEMPERATURE RATING

Maximum continuous working temperature 75°C  
If the water temperature exceeds 75°C, an approved tempering valve must be fitted

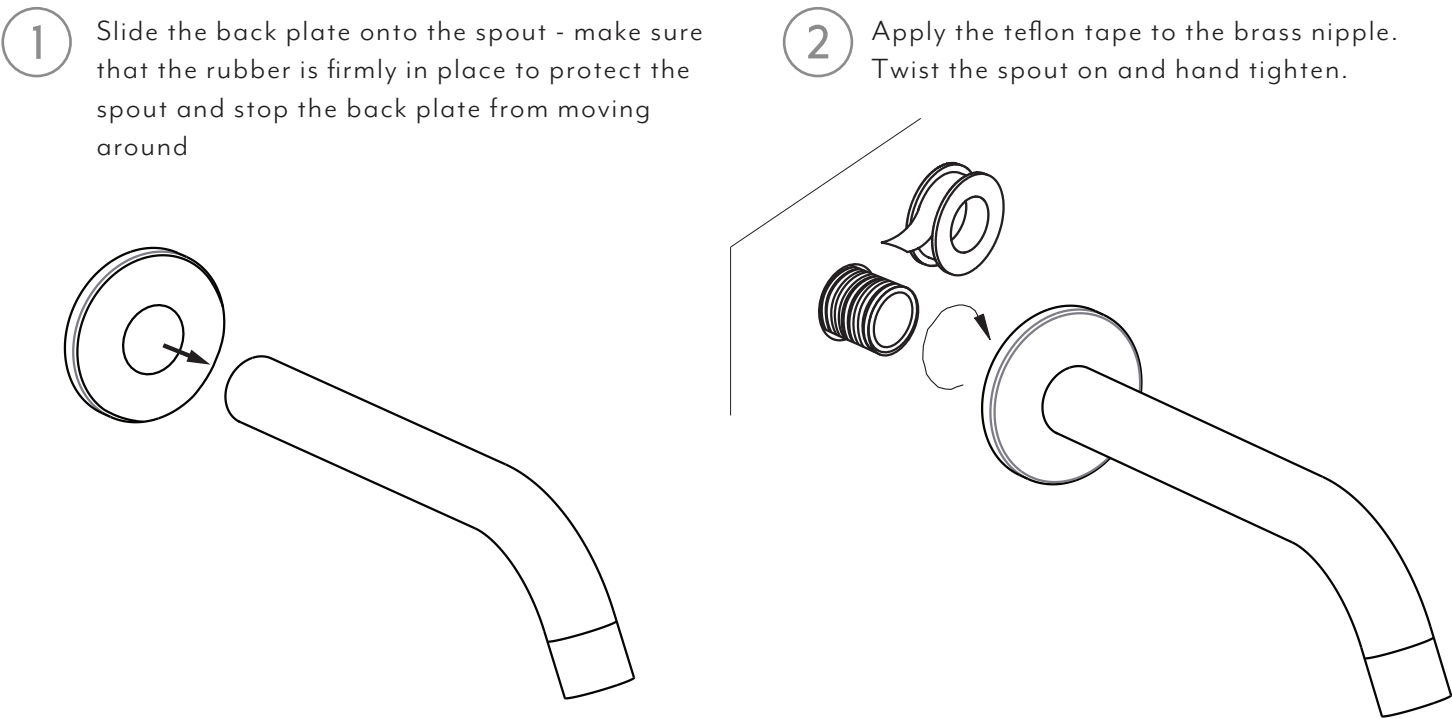
Disclaimer: Products in this specification manual must by regulation be installed by licensed and registered trade people. The manufacturer/distributor reserves the right to vary specifications or delete models from their range without prior notification. Dimensions are nominal measurements only. Dimensions and set-outs listed are correct at time of publication however the manufacturer/distributor takes no responsibility for printing errors. All ABI Products are designed in Australia. Copyright ABI Interiors 2019.



# WALL MOUNTED SPOUT

## INSTALLATION MANUAL

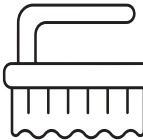
This product must be installed by a licensed plumber



Regularly clean with mild liquid detergent or soap and water



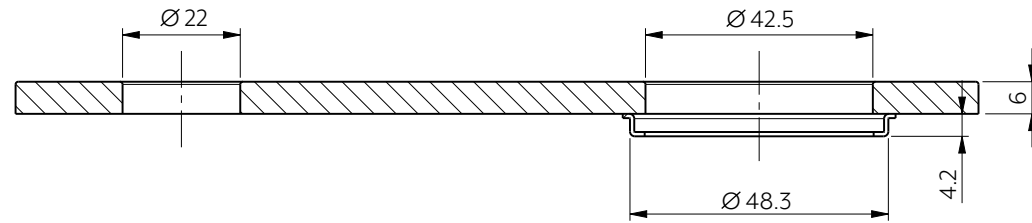
DO NOT use cream cleaners or bleach. These substances are abrasive



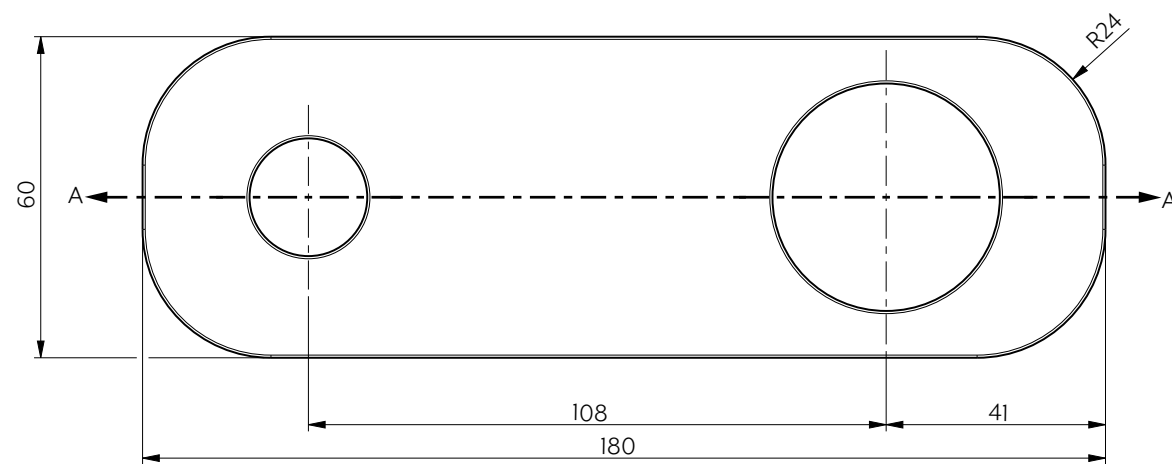
DO NOT use cleaning pads with abrasive surfaces as this may scratch the material



## ROUNDED RECTANGLE MIXER & SPOUT BACKPLATE



Section View A-A



Front View

**Note:** Dimensions are nominal measurements only

### SPECIFICATIONS

#### RECOMMENDED USE

Domestic

#### CONSTRUCTION

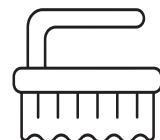
Solid Brass



Regularly clean with mild liquid detergent or soap and water



DO NOT use cream cleaners or bleach. These substances are abrasive



DO NOT use cleaning pads with abrasive surfaces as this may scratch the material

## INSTALLATION GUIDE

Note: This product must be installed by a licensed tradesperson.  
This is a general installation guide - there are many factors that are involved that can alter the installation method.

USE ROUGH-IN TEMPLATE PROVIDED TO ENSURE ACCURATE POSITIONING

