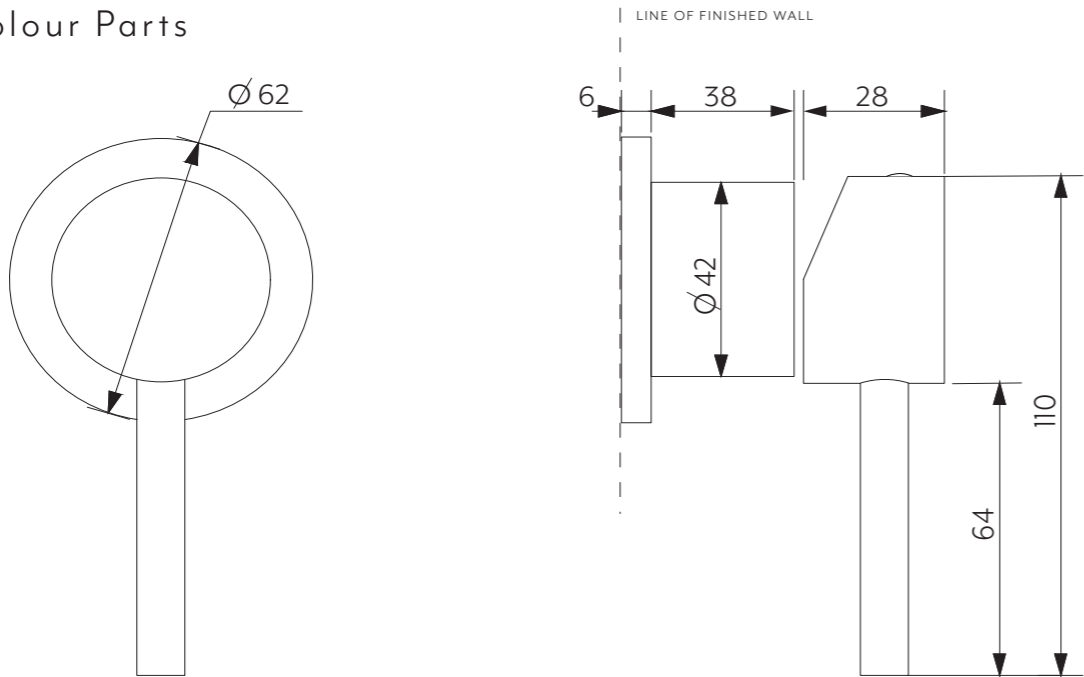


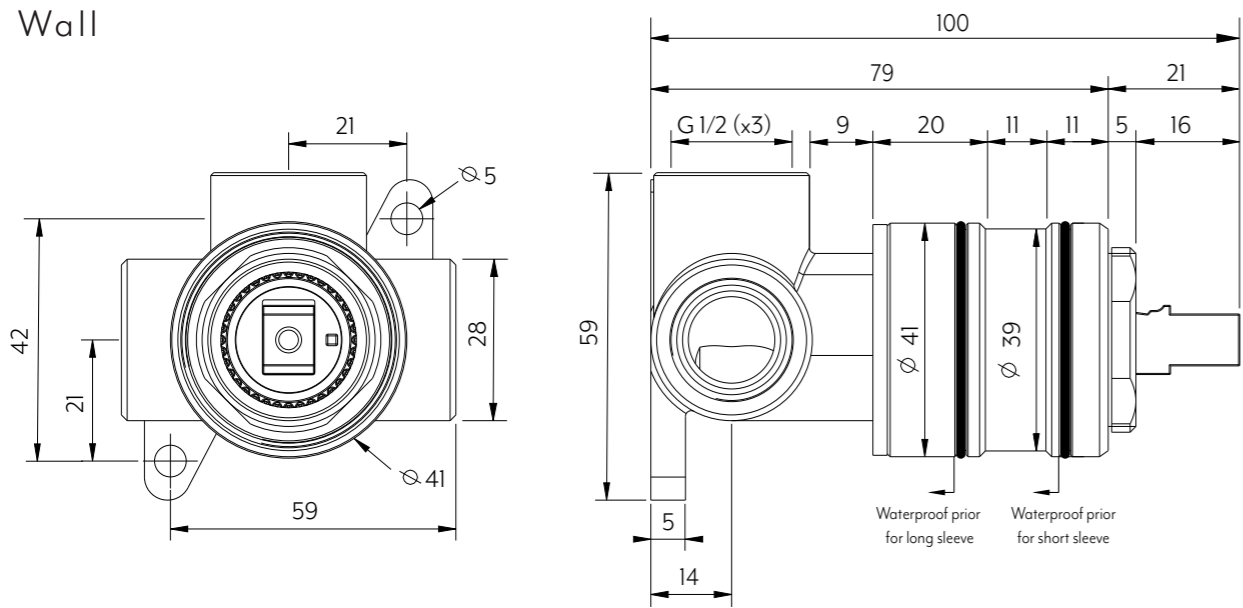


ELYSIAN MINIMAL HANDLE SET

Just Colour Parts



In Wall



Disclaimer: To achieve infiniti (interchangeable sleeves) waterproofing can not exceed past sleeve B.

Note: Dimensions are nominal measurements only

SPECIFICATIONS

RECOMMENDED USE

Domestic

CONSTRUCTION

Solid Brass

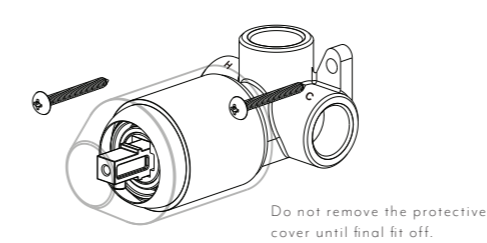
Disclaimer: Products in this specification manual must by regulation be installed by licensed and registered trade people. The manufacturer/distributor reserves the right to vary specifications or delete models from their range without prior notification. Dimensions are nominal measurements only. Dimensions and set-outs listed are correct at time of publication however the manufacturer/distributor takes no responsibility for printing errors. All ABI Products are designed in Australia. Copyright ABI Interiors Pty Ltd 2021.



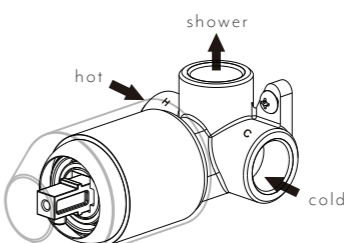
INSTALLATION GUIDE

Note: This product must be installed by a licensed plumber.
This is a general installation guide - there are many factors that are involved that can alter the installation method.

1 Fasten screws to secure the shower mixer assembly in place.

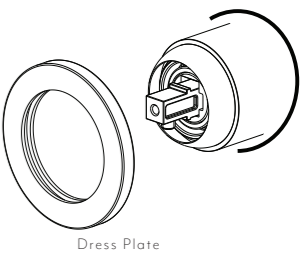


2 Attach water supply and water outlet. TEST AND CHECK FOR LEAKS

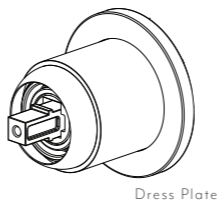


3 Create a 45mm round hole in cement sheet and tiles

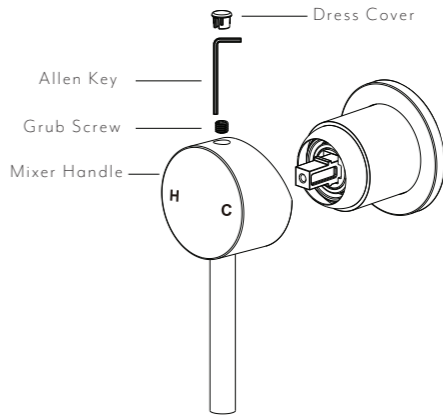
Remove the protective cover. Push the dress plate over the shower mixer assembly gently.



4 Assemble the plate and fix it in place.



5 Push in the rubber gasket to mixer handle. Fasten the grub screw firmly with the allen key



WHATS IN THE BOX

EXPLODED VIEW

Item Description Code

- 1 Handle
- 2 Dome
- 3 Sleeve
- 4 Back Plate

