

**Note:** Dimensions are nominal measurements only

SPECIFICATIONS	
RECOMMENDED USE	Domestic, Commercial
MATERIAL	Brass
PRESSURE RATING	Recommended minimum working pressure 0.2 Bar Recommended maximum working pressure 5 Bar Hot and cold water inlet pressure should be equal
TEMPERATURE RATING	Maximum continuous working temperature 75°C If the water temperature exceeds 75°C, an approved tempering valve must be fitted
SUITABLE HOT WATER UNITS	Storage tank: Yes Continuous Flow: Yes Gravity Feed: Suitable
STANDARDS	Flow rate: 5.44 L/min

**NOTE: PRODUCT DOES NOT INCLUDE FILTER OR FILTER CONNECTION FITTINGS.**

Disclaimer: Products in this specification manual must by regulation be installed by licensed and registered trade people. The manufacturer/distributor reserves the right to vary specifications or delete models from their range without prior notification. Dimensions are nominal measurements only. Dimensions and set-outs listed are correct at time of publication however the manufacturer/distributor takes no responsibility for printing errors. All ABI Products are designed in Australia. Copyright ABI Interiors Pty Ltd 2021.

## INSTALLATION GUIDE

**Note:** This product must be installed by a licensed tradesperson. This is a general installation guide - there are many factors that are involved that can alter the installation method. This product install must comply with the standards in your respective country and must be adhered to by your licensed tradesperson.

- 1

1. Use the mixer as an aid to locate the positioning of the fixing bracket. Mark the holes.

2. Fix the bracket
- 2

Push the cover plate over the body of tap.
- 3

1. Screw the mixer onto the 1/2 inch threaded pipe (use appropriate thread sealant)

2. Ensure the mixer is tight and in an upright position.
- 4

1. Tighten the grub screw with the alan key.

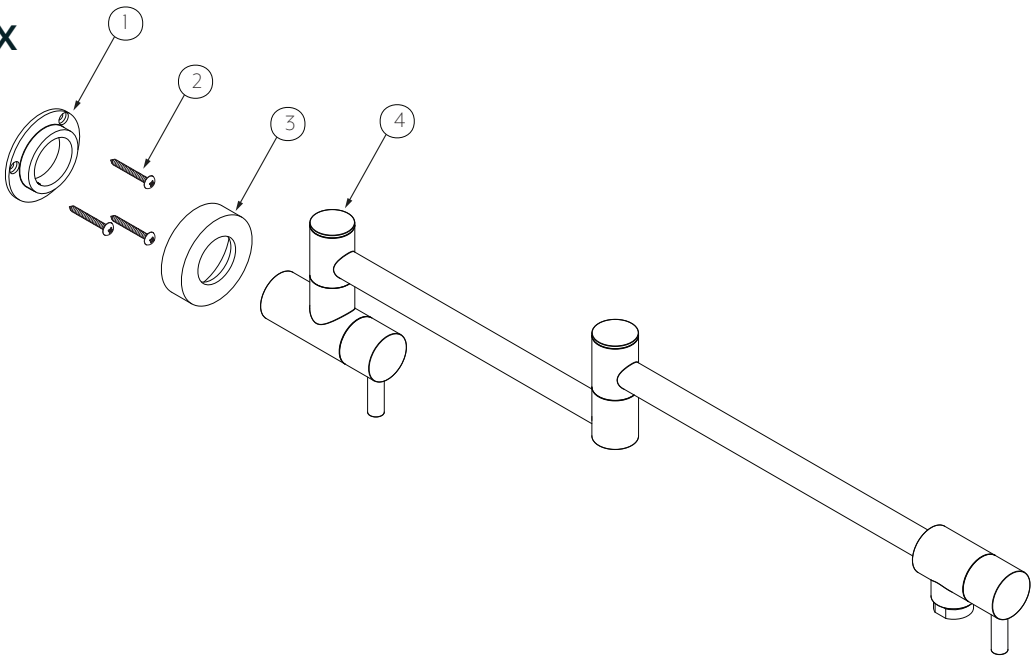
2. Finally push the cover plate over the fixing bracket.

3. Test and commission before use.

## WHAT'S IN THE BOX

### EXPLODED VIEW

1. Fixing bracket
2. Screws
3. Cover plate
4. Faucet body



Regularly clean with mild liquid detergent or soap and water.



DO NOT use cream cleaners or bleach. These substances are abrasive.



DO NOT use cleaning pads with abrasive surfaces as this may scratch the material.