

Side View

Front View

Note: Dimensions are nominal measurements only

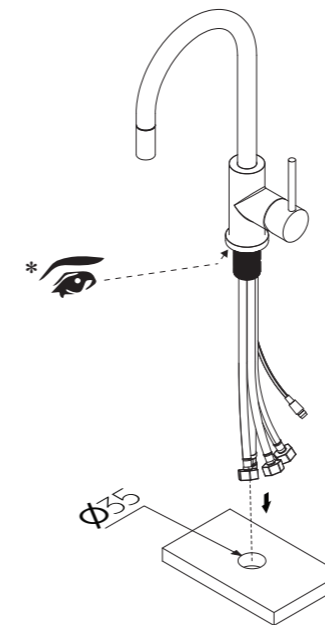
SPECIFICATIONS	
RECOMMENDED USE	Domestic, Commercial
MATERIAL	Stainless Steel 304
PRESSURE RATING	Recommended minimum working pressure 150kPa Recommended maximum working pressure 500kPa Hot and cold water inlet pressure should be equal
TEMPERATURE RATING	Maximum continuous working temperature 75°C If the water temperature exceeds 75°C, an approved tempering valve must be fitted
SUITABLE HOT WATER UNITS	Storage tank: Yes Continuous Flow: Yes Gravity Feed: Not suitable
STANDARDS	WELS 5 star - Flow rate: 6L/min Registration No. T41205 Solenoid: CJT191-2014
SENSOR	Sensor is set to activate at a distance of 15cm (adjustable). Sensor has safety auto shut-off time of 30 seconds.

Disclaimer: Products in this specification manual must by regulation be installed by licensed and registered trade people. The manufacturer/distributor reserves the right to vary specifications or delete models from their range without prior notification. Dimensions are nominal measurements only. Dimensions and set-outs listed are correct at time of publication however the manufacturer/distributor takes no responsibility for printing errors. All ABI Products are designed in Australia. Copyright ABI Interiors 2022 Pty Ltd.

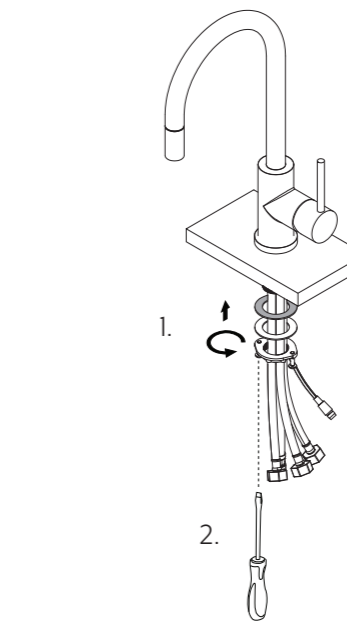
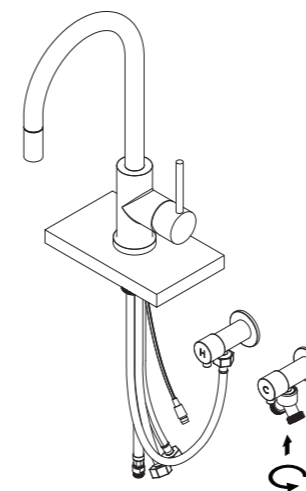
INSTALLATION GUIDE

Note: This product must be installed by a licensed plumber. This is a general installation guide - there are many factors involved that can alter the installation method. **AU/NZ:** For installations within Australia and New Zealand, this product must be installed in compliance with AS/NZS 3500. **UK:** For installations in the United Kingdom this product must be installed in compliance with the Water Supply (Water Fittings) Regulations and Water Supply (Water Fittings) (Scotland) Byelaws. **Other:** For installations outside these countries, this product must be installed in compliance with the standards in your respective country.

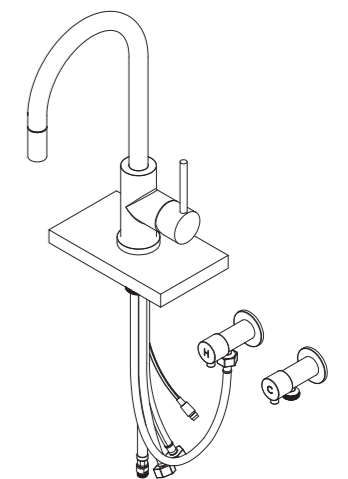
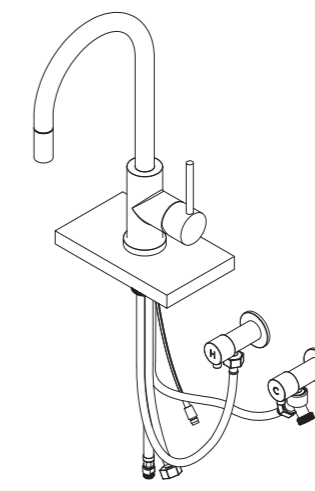
- 1 Remove locking collar and washers and feed all four flexi hoses and sensor line through countertop cutout one at a time.
***Note:** Ensure rubber is correctly recessed into base plate
- 2 1. Replace both washers ensuring that the rubber washer goes on first.
Hand tighten the locking collar.
2. Use a screwdriver to tighten the two bolts until the mixer is secured in place.
- 3 Take front facing hose (labelled hot) and connect to the hot outlet.
Use thread tape as required and ensure no kinks in hose.



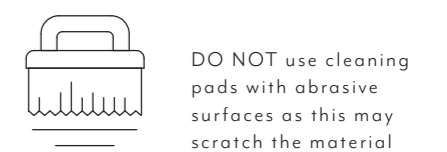
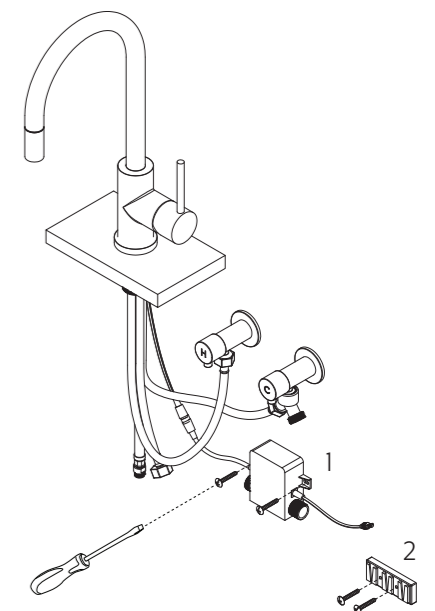
- 4 Screw the first diagonal compression tee to the cold outlet.



- 5 Connect the rear facing flexi hose (labelled cold) to one side of the tee.



- 6 Screw solenoid (1) and battery case bracket (2) to surrounding wall. Ensuring that the solenoid is within reach of the remaining flexi hoses.

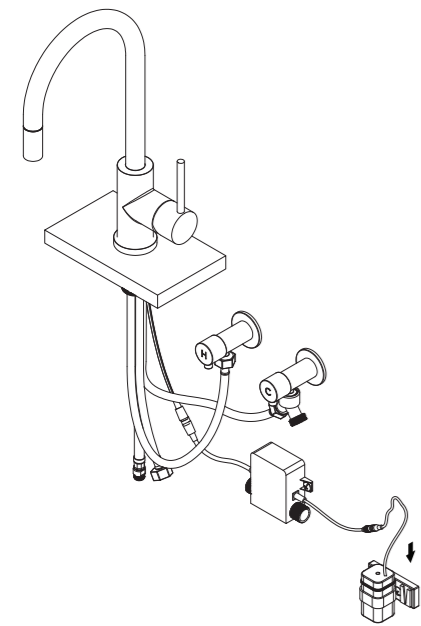


INSTALLATION GUIDE

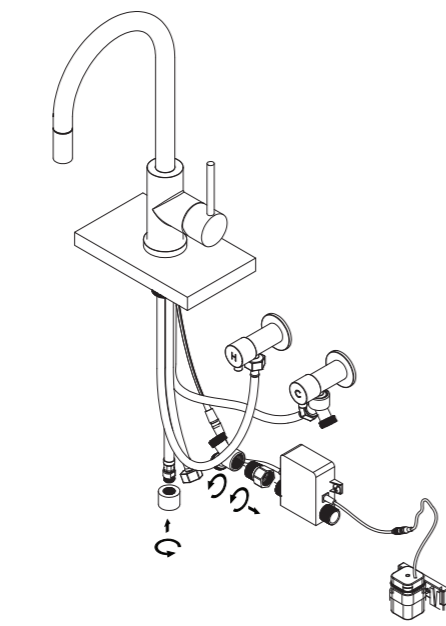
Note: This product must be installed by a licensed plumber. This is a general installation guide - there are many factors involved that can alter the installation method. **AU/NZ:** For installations within Australia and New Zealand, this product must be installed in compliance with AS/NZS 3500. **UK:** For installations in the United Kingdom this product must be installed in compliance with the Water Supply (Water Fittings) Regulations and Water Supply (Water Fittings) (Scotland) Byelaws. **Other:** For installations outside these countries, this product must be installed in compliance with the standards in your respective country.



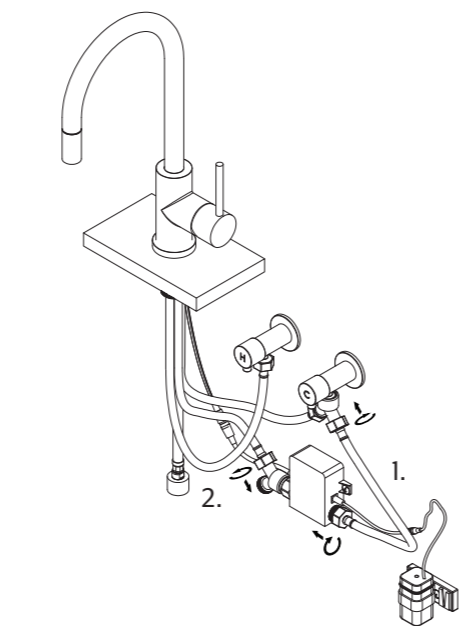
7 Install battery case in holder and connect to the solenoid.*
*Note: Alternatively an AC adapter can be connected to the solenoid (sold separately).



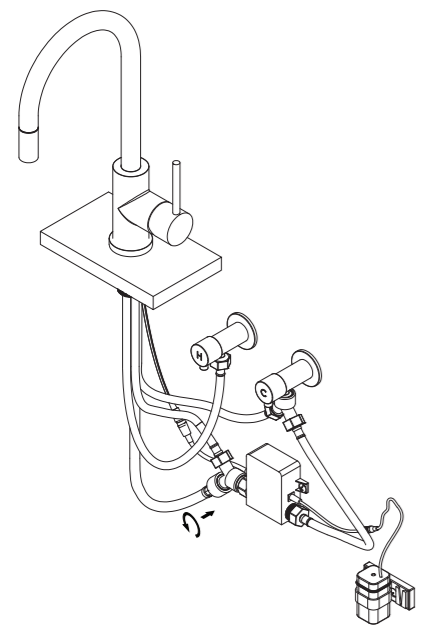
8 On the solenoid outlet marked "OUT", first connect the non-return valve, followed by the second diagonal compression tee. Then connect the G1/2 female adapter to the end of the pull-out flexi hose.



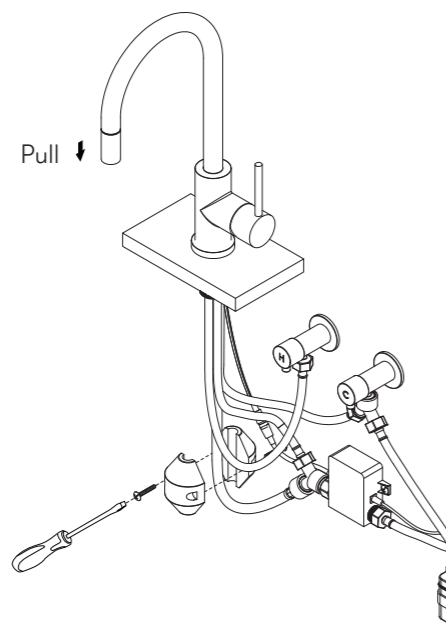
9 1. Connect the Cold outlet diagonal compression tee to the "IN" side of the solenoid with the G1/2 to G1/2 flexi. 2. Connect the remaining side facing flexi to one side of the tee attached to the solenoid.



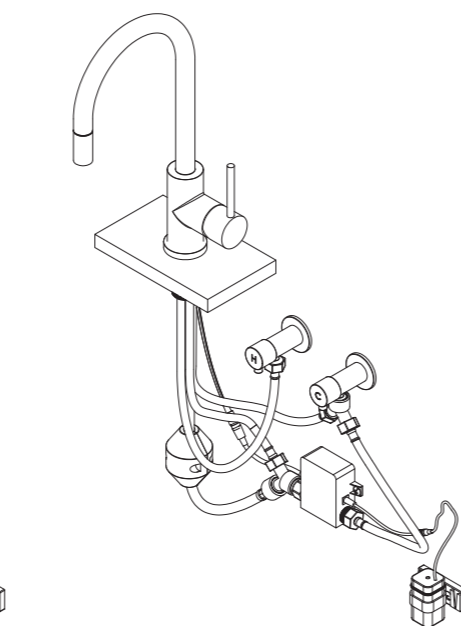
10 Connect the pull-out flexi to the remaining side of the diagonal tee attached to the solenoid.



11 Connect weight to the pull-out hose. Test pull-out function and weight positioning before tightening with screw driver.



12 Arrange flexi hoses so that there are no obstructions that will prevent the weight from falling and pulling the spout tip back in.

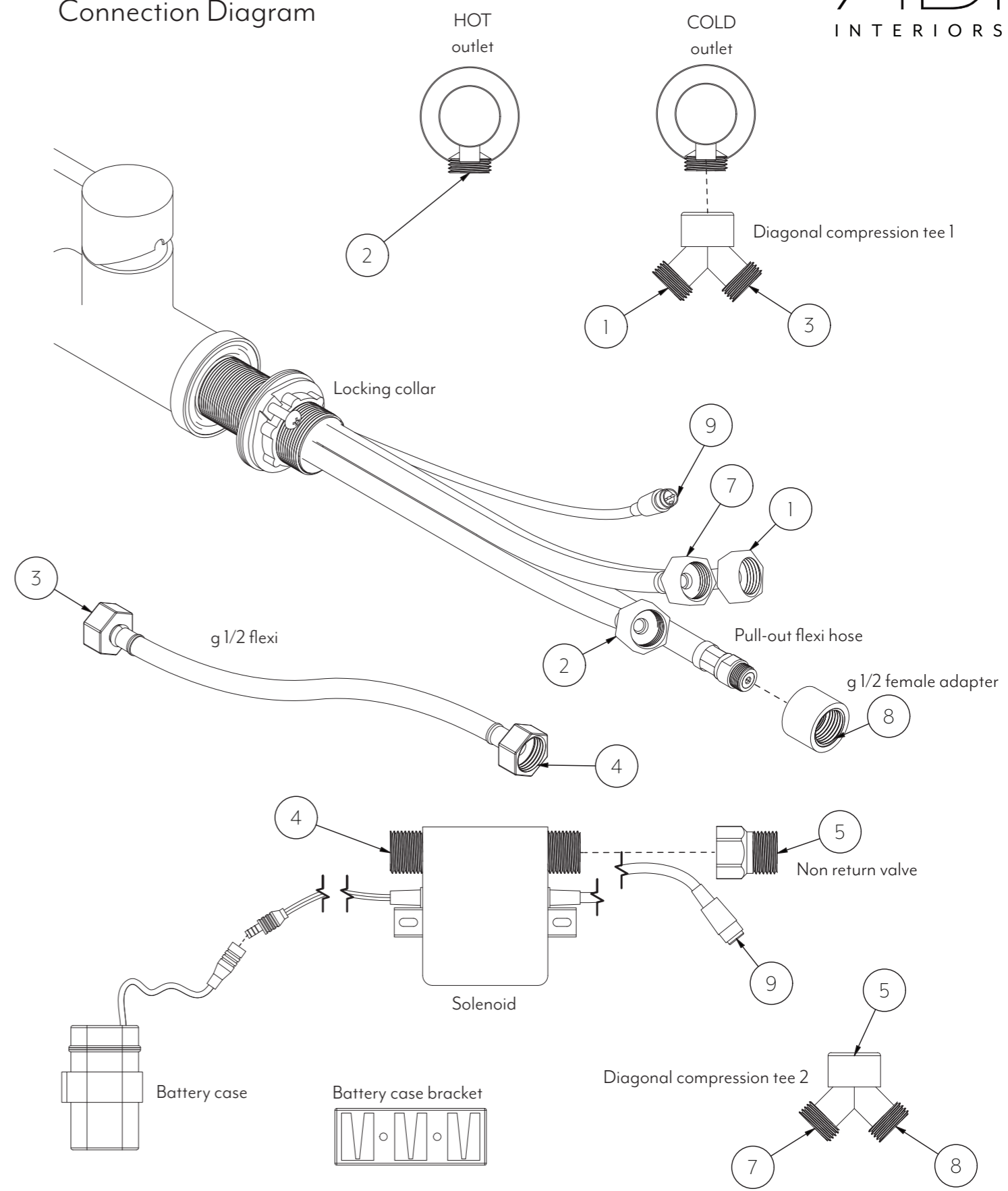


Regularly clean with mild liquid detergent or soap and water

DO NOT use cream cleaners or bleach. These substances are abrasive

DO NOT use cleaning pads with abrasive surfaces as this may scratch the material

Connection Diagram



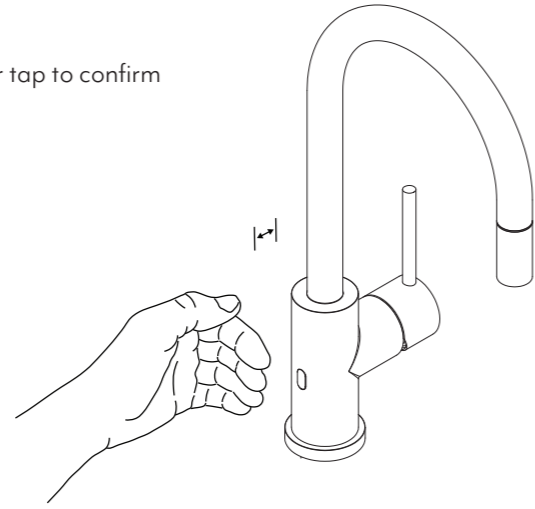
Regularly clean with mild liquid detergent or soap and water

DO NOT use cream cleaners or bleach. These substances are abrasive

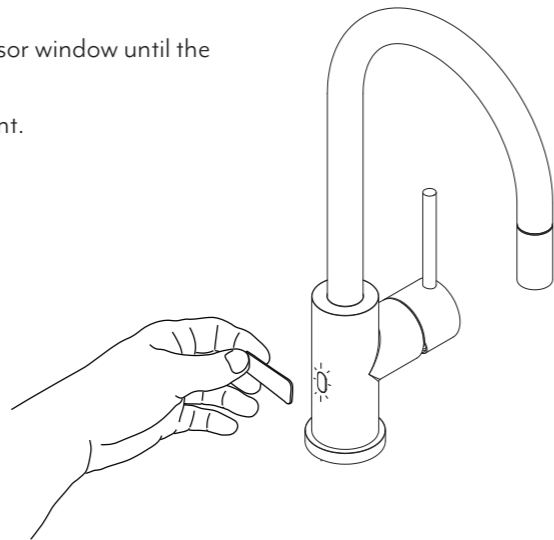
DO NOT use cleaning pads with abrasive surfaces as this may scratch the material

How to adjust the distance of the sensor activation

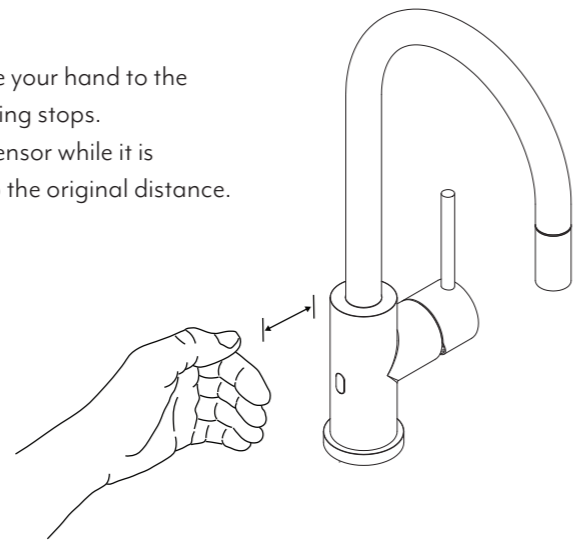
- ① Place your hand in front of the sensor tap to confirm the current distance.



- ② Place a magnet* in front of the sensor window until the sensor starts flashing.
*A fridge magnet may be convenient.



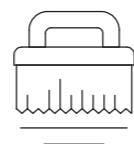
- ③ While the sensor is flashing, place your hand to the distance you prefer until the flashing stops.
If there is nothing in front of the sensor while it is flashing, then the sensor will keep the original distance.



Regularly clean with mild liquid detergent or soap and water



DO NOT use cream cleaners or bleach. These substances are abrasive



DO NOT use cleaning pads with abrasive surfaces as this may scratch the material