

**Note:** Dimensions are nominal measurements only

## SPECIFICATIONS

### RECOMMENDED USE

Domestic

### TEMPERATURE RATING

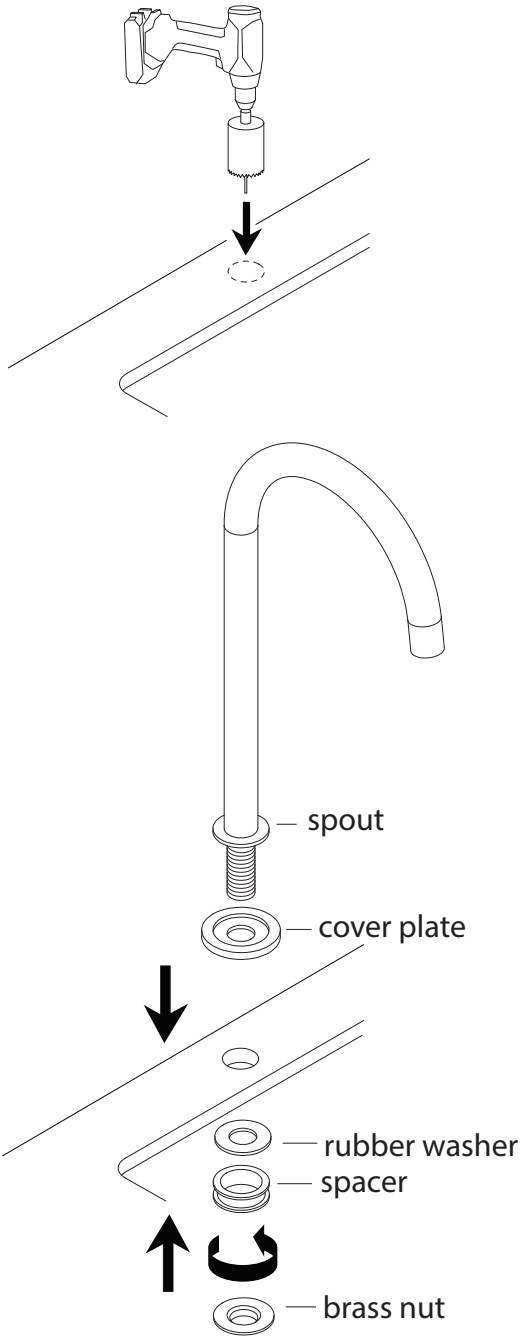
Maximum continuous working temperature 75°C  
If the water temperature exceeds 75°C, an approved tempering valve must be fitted

### STANDARDS

WELS Star Rating (5Star) – Nominal Flow Rate(5.0 L/M)  
Registration No.(T38391 & T38391 (v))

# INSTALLATION GUIDE

Note: This product must be installed by a licensed plumber.  
This is a general installation guide - there are many factors that are involved that can alter the installation method.

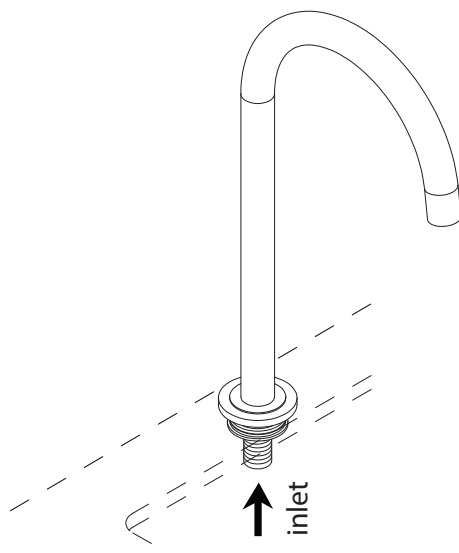


1 Mark out desired location of spout.

Cut hole using a **25mm** hole saw.

**Note:** If cutting a stone benchtop it will need to be cut in a controlled environment by a licensed tradesperson as per OH&S regulations.

2 Fix spout to benchtop with brass nut ensuring cover plate is fitted above the bench and the rubber washer and spacer is fitted to underside of benchtop.



3 Connect pipework to inlet of spout.

