

Note: Handle not included with inwall mixer body

Note: Dimensions are nominal measurements only

SPECIFICATIONS

RECOMMENDED USE

Domestic

CONSTRUCTION

Solid Brass

Disclaimer: Products in this specification manual must by regulation be installed by licensed and registered trade people. The manufacturer/distributor reserves the right to vary specifications or delete models from their range without prior notification. Dimensions are nominal measurements only. Dimensions and set-outs listed are correct at time of publication however the manufacturer/distributor takes no responsibility for printing errors. All ABI Products are designed in Australia. Copyright ABI Interiors Pty Ltd 2021.

INSTALLATION GUIDE

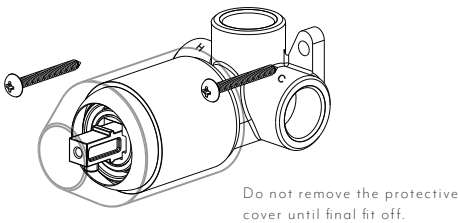
Note: This product must be installed by a licensed tradesperson.

This is a general installation guide - there are many factors that are involved that can alter the installation method.

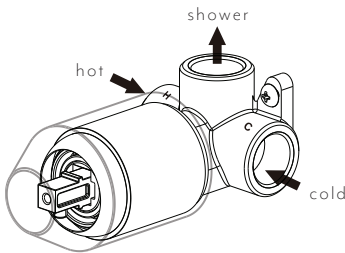
This product install must comply with the standards in your respective country and must be adhered to by your licensed tradesperson.

Note: Handle not included with in wall mixer body.

1 Fasten screws to secure the shower mixer assembly in place.

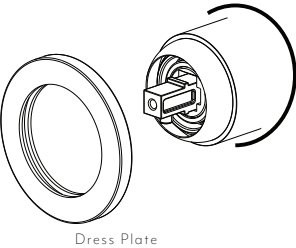


2 Attach water supply and water outlet. TEST AND CHECK FOR LEAKS

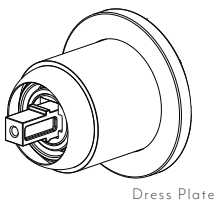


3 Create a 45mm round hole in cement sheet and tiles

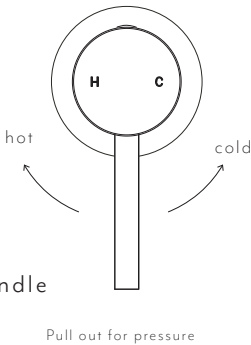
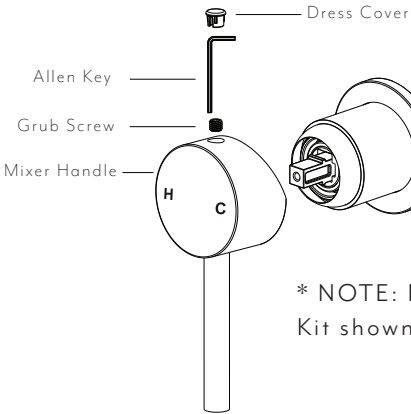
Remove the protective cover. Push the dress plate over the shower mixer assembly gently.



4 Assemble the plate and fix it in place.



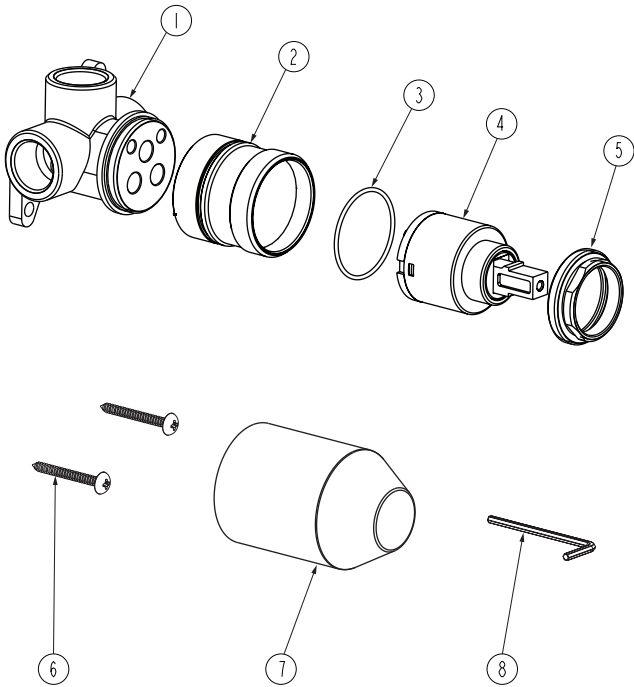
5 Push in the rubber gasket to mixer handle. Fasten the grub screw firmly with the allen key



WHAT'S IN THE BOX

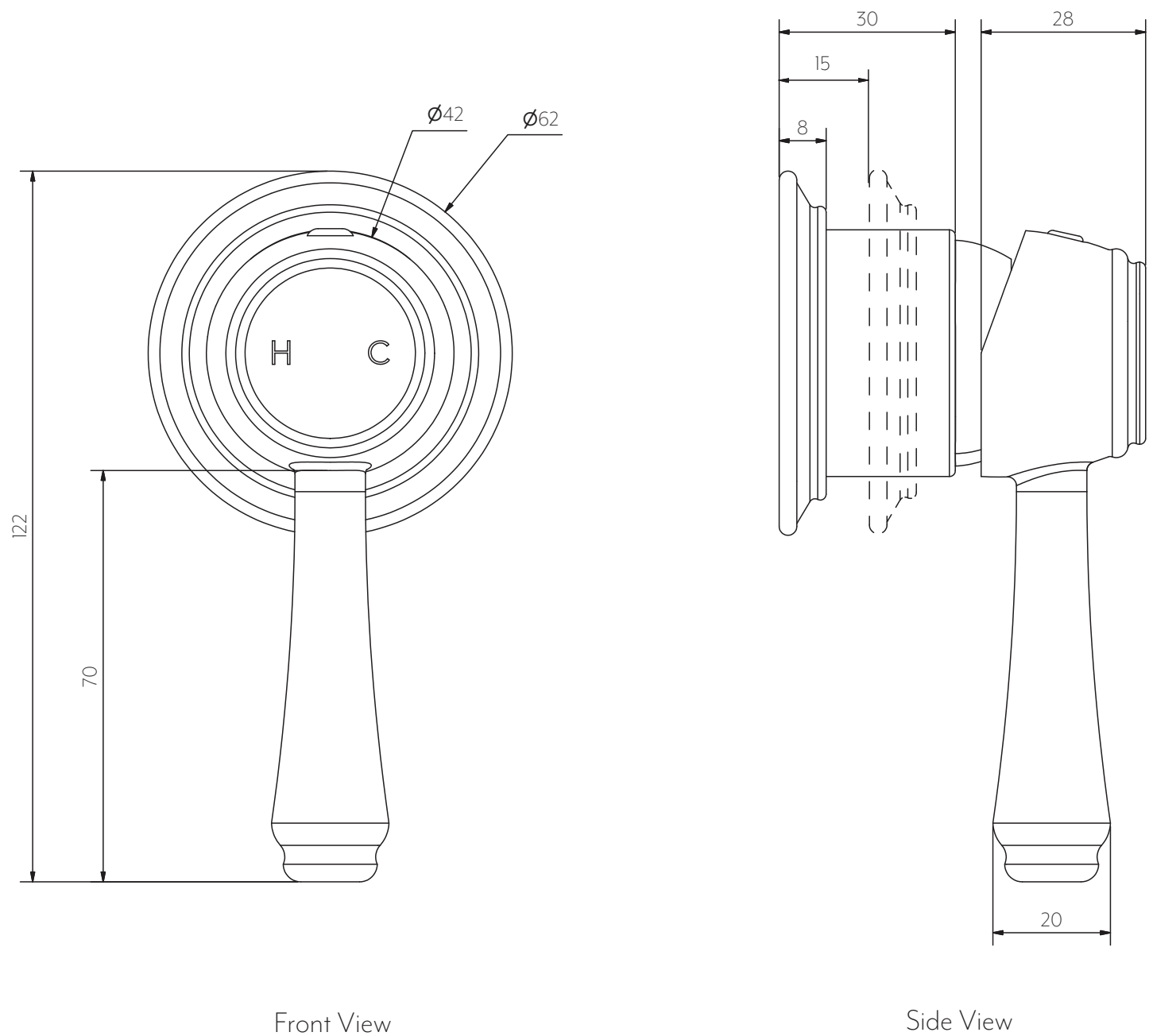
EXPLODED VIEW

- Item Description Code
- 1-2 Body
- 3 Rubber Ring
- 4 Cartridge
- 5 Locking Nut
- 6 Allen Key
- 7 Protective Case
- 8 Fixing Screws





KINGSLEY MIXER HANDLE KIT



Note: In-wall not included in handle kit

Note: Dimensions are nominal measurements only

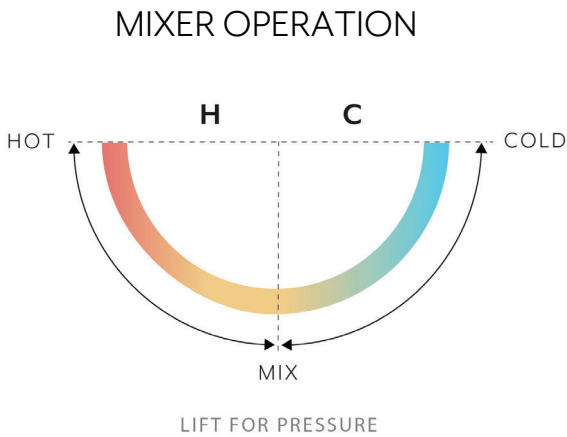
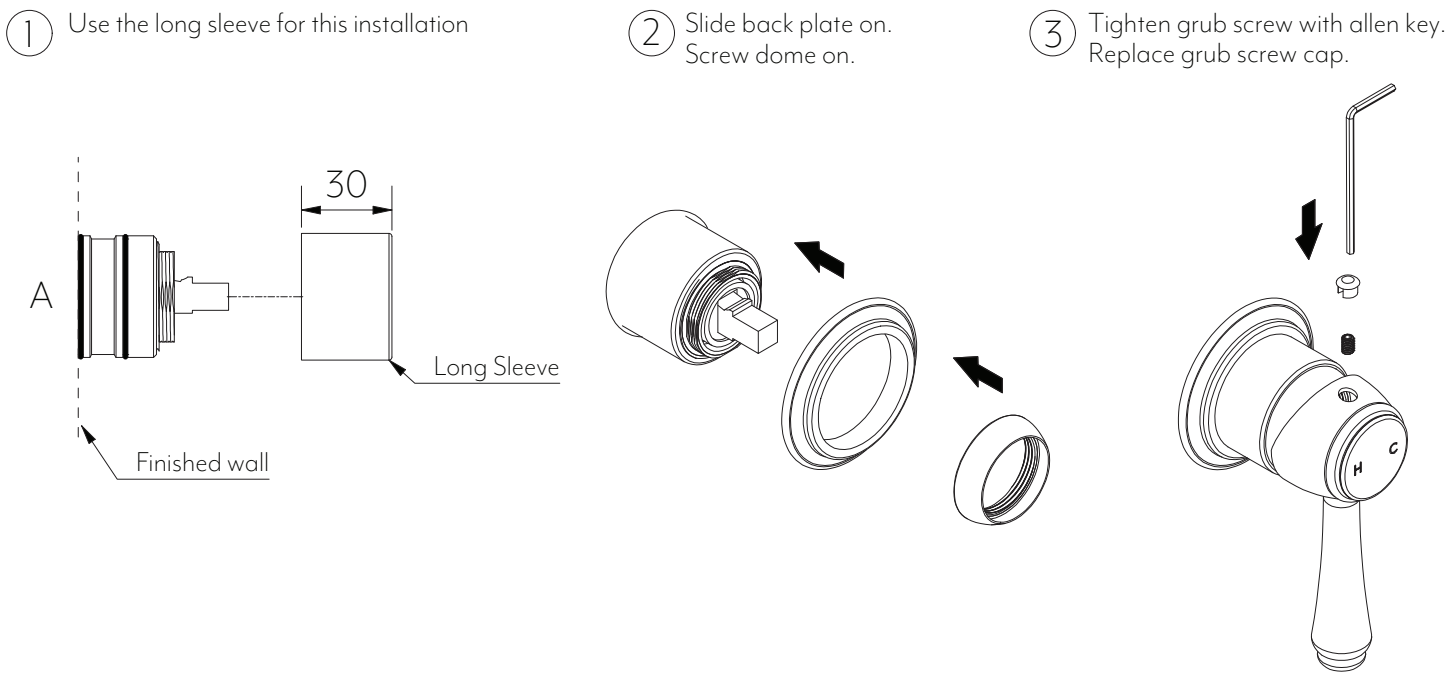
SPECIFICATIONS	
RECOMMENDED USE	Domestic
CONSTRUCTION	Solid Brass

Disclaimer: Products in this manual must by law be installed by licensed and registered tradespeople in accordance with the relevant standards. ABI and the manufacturer/distributor reserve the right to vary specifications or delete models from their range without prior notification. Dimensions are nominal measurements only. The information listed is correct at the time of publication, however ABI and the manufacturer/distributor takes no responsibility for printing errors. Copyright © ABI Interiors Pty Ltd 2021.

INSTALLATION GUIDE

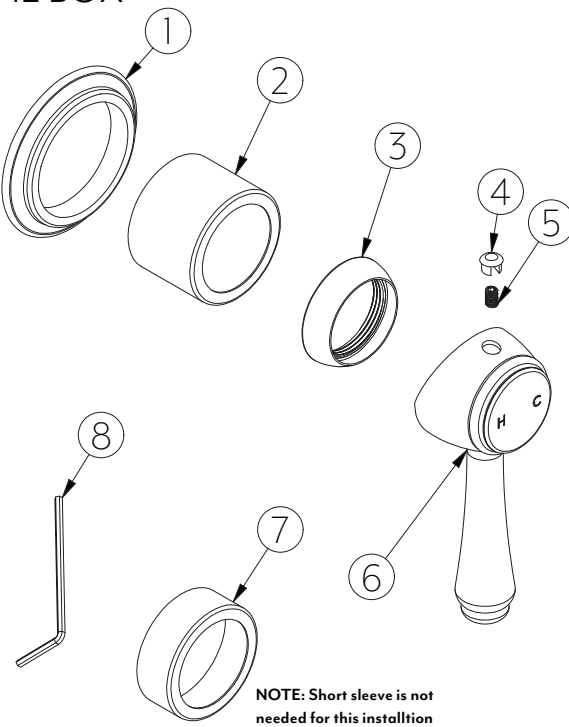
Note: This product must be installed by a licensed tradesperson. This is a general installation guide - there are many factors that are involved that can alter the installation method. This product install must comply with the standards in your respective country and must be adhered to by your licensed tradesperson.

NOTE: See Minimal Mixer Body installation guide for In-Wall set out.



WHAT'S IN THE BOX

1. Back plate
2. Long sleeve
3. Dome
4. Grubs screw cap
5. Grub screw
6. Handle
7. Short sleeve
8. Allen key



Regularly clean with mild liquid detergent or soap and water.



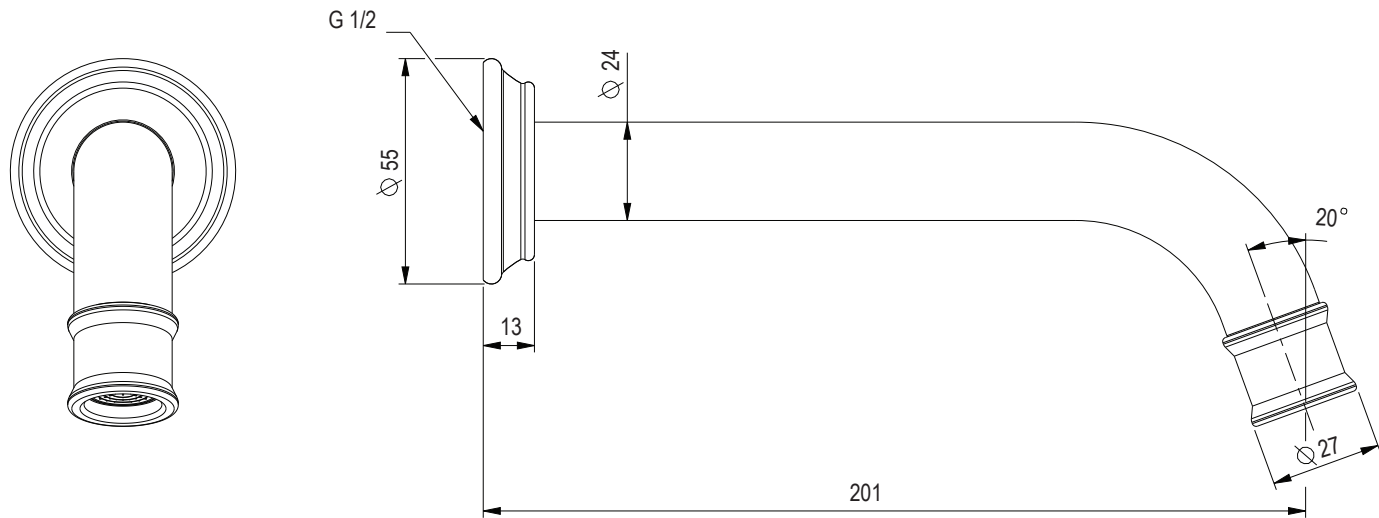
DO NOT use cream cleaners or bleach. These substances are abrasive.



DO NOT use cleaning pads with abrasive surfaces as this may scratch the material.



KINGSLEY WALL MOUNTED SPOUT (PROVINCIAL)



Front View

Side View

Note: Dimensions are nominal measurements only

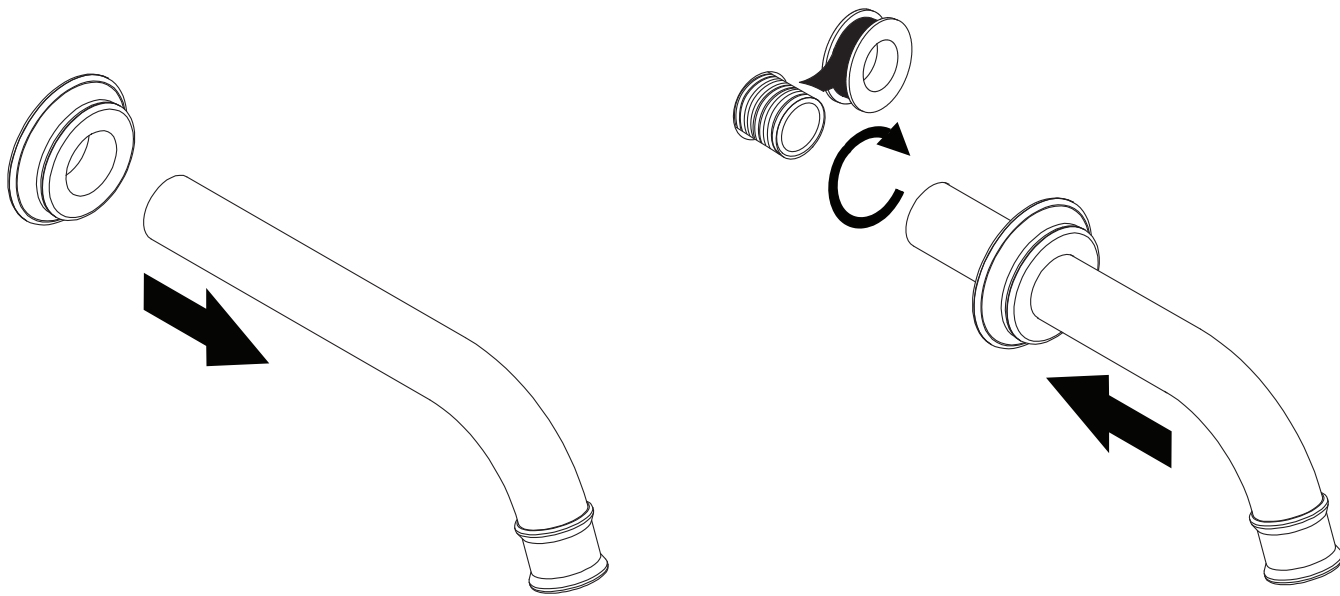
SPECIFICATIONS	
RECOMMENDED USE	Domestic
MATERIAL	Solid Brass
TEMPERATURE RATING	Maximum continuous working temperature 75°C If the water temperature exceeds 75°C, an approved tempering valve must be fitted
PRESSURE RATING	Recommended minimum working pressure 0.2 Bar Recommended maximum working pressure 5 Bar Hot and cold water inlet pressure should be equal

Disclaimer: Products in this specification manual must by regulation be installed by licensed and registered trade people. The manufacturer/distributor reserves the right to vary specifications or delete models from their range without prior notification. Dimensions are nominal measurements only. Dimensions and set-outs listed are correct at time of publication however the manufacturer/distributor takes no responsibility for printing errors. All ABI Products are designed in Australia. Copyright ABI Interiors 2019.

INSTALLATION GUIDE

Note: This product must be installed by a licensed tradesperson. This is a general installation guide - there are many factors that are involved that can alter the installation method. This product install must comply with the standards in your respective country and must be adhered to by your licensed tradesperson.

- 1 Slide back plate onto spout. Ensure o ring is firmly gripping the spout and creating a tight seal.
- 2 Apply the teflon tape to the brass nipple. Twist the spout on and hand tighten. Push back plate to the wall surface.



High Pressure

Low Pressure

Unscrew spout tip to change aerator for alternative pressure option.

WHAT'S IN THE BOX	
1x Back plate	1x Spout



Regularly clean with mild liquid detergent or soap and water.



DO NOT use cream cleaners or bleach. These substances are abrasive.



DO NOT use cleaning pads with abrasive surfaces as this may scratch the material.