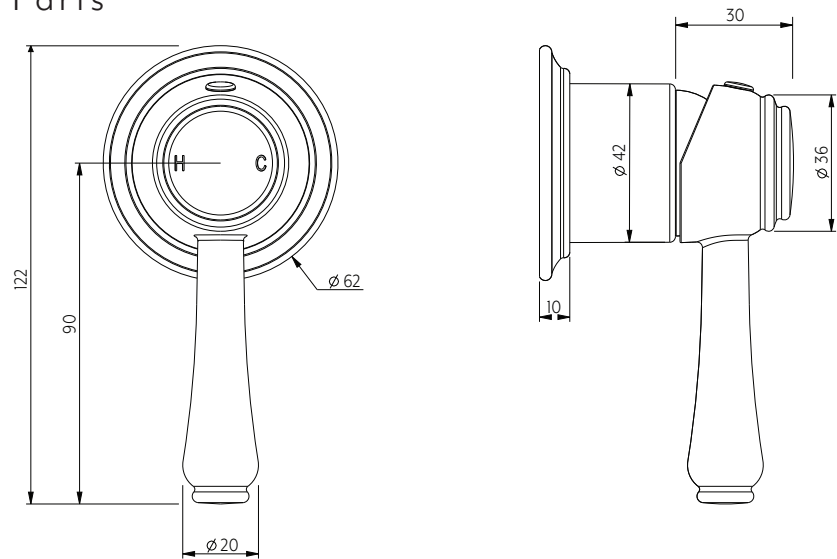


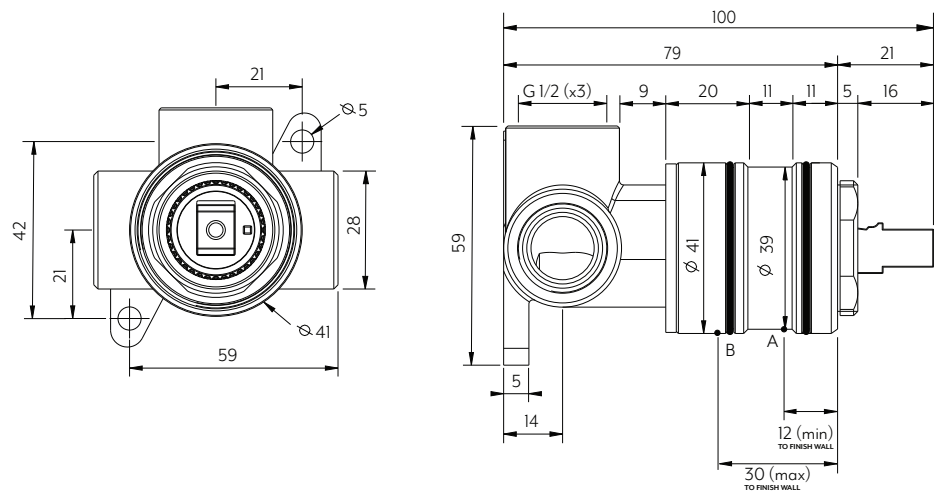


# KINGSLEY SHOWER MIXER (PROVINCIAL)

## Just Colour Parts



## In Wall



Disclaimer: To achieve infintiti (interchangeable sleeves) **finish wall** must fall between **Point A** and **B**  
Your In-wall component must be installed **without the sleeve attached**, please ensure that your chosen sleeve doesn't break your waterproofing seal.

**Note:** Dimensions are nominal measurements only

SPECIFICATIONS	
RECOMMENDED USE	Domestic
CONSTRUCTION	Solid Brass
TEMPERATURE RATING	Maximum continuous working temperature 75°C If the water temperature exceeds 75°C, an approved tempering valve must be fitted
PRESSURE RATING	Recommended minimum working pressure 0.2 Bar Recommended maximum working pressure 5 Bar Hot and cold water inlet pressure should be equal
SUITABLE HOT WATER UNITS	Storage tank: Yes Continuous Flow: Yes Gravity Feed: Suitable

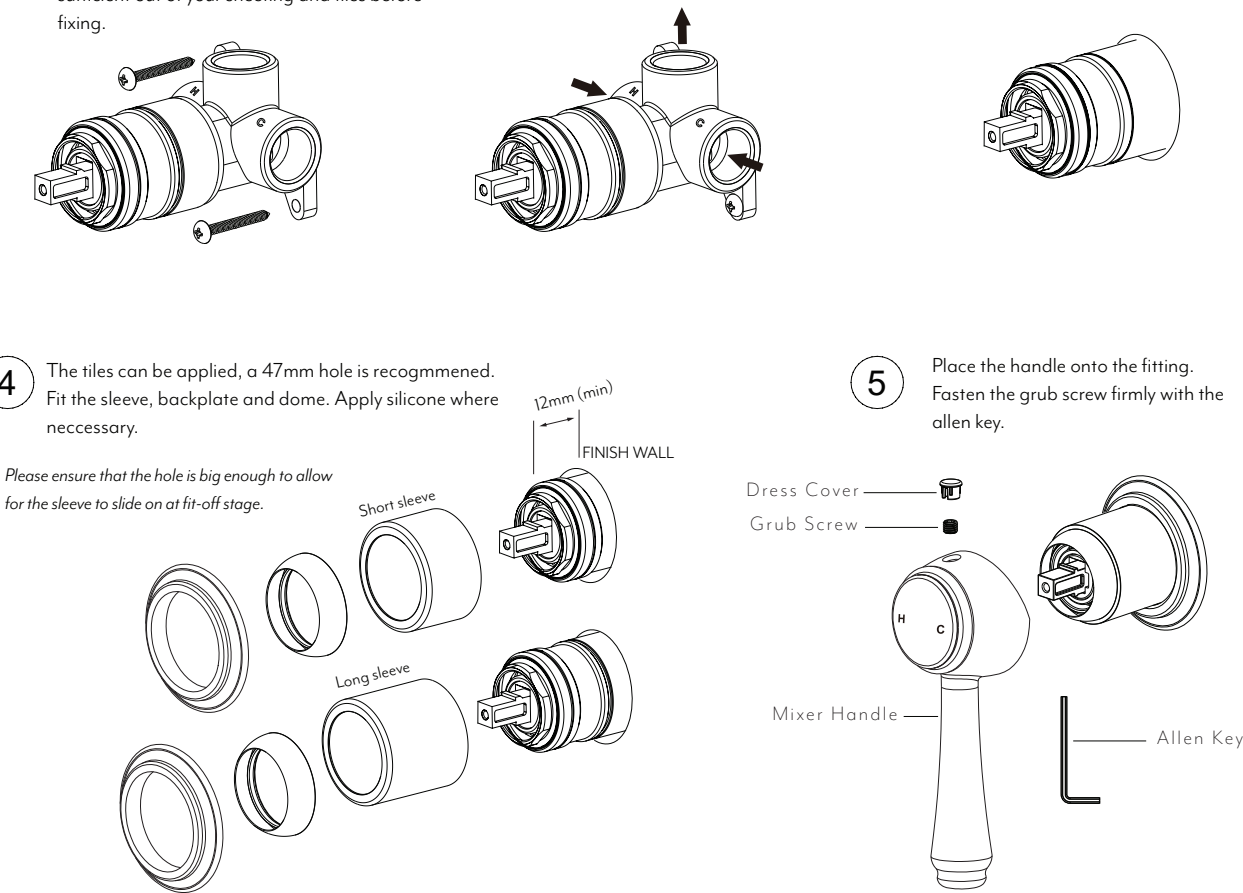
Disclaimer: Products in this specification manual must by regulation be installed by licensed and registered trade people. The manufacturer/distributor reserves the right to vary specifications or delete models from their range without prior notification. Dimensions are nominal measurements only. Dimensions and set-outs listed are correct at time of publication however the manufacturer/distributor takes no responsibility for printing errors. All ABI Products are designed in Australia. Copyright ABI Interiors 2019.



## INSTALLATION GUIDE

Note: This product must be installed by a licensed plumber.  
This is a general installation guide - there are many factors that are involved that can alter the installation method. For installs outside Australia and New Zealand, the standards in your respective country must be adhered to by your licensed tradesperson.

- Fasten screws to secure the wall mixer into wall structure.  
**\*Ensure** your In-wall mixer body will protrude sufficient out of your sheeting and tiles before fixing.
- Attach water supply and water outlet. **TEST AND CHECK FOR LEAKS.**
- Your sheeting and waterproofing layer can now be applied. Depending on what length sleeve you use, ensure it does not break your waterproof layer.
- The tiles can be applied, a 47mm hole is recogmmened. Fit the sleeve, backplate and dome. Apply silicone where necessary.  
*Please ensure that the hole is big enough to allow for the sleeve to slide on at fit-off stage.*
- Place the handle onto the fitting. Fasten the grub screw firmly with the allen key.



## HOW TO CUSTOMIZE YOUR MIXER

STEP 1: Visit our online shop or go in-store to purchase your handle kit - Be sure to check the mixer type before you purchase!

STEP 2: Remove the handle, dome and sleeve from your mixer & repeat steps above for installation! (Ensure waterproofing was conducted prior to sleeve install).

STEP 3: Be sure to get this checked by your plumber prior to using.

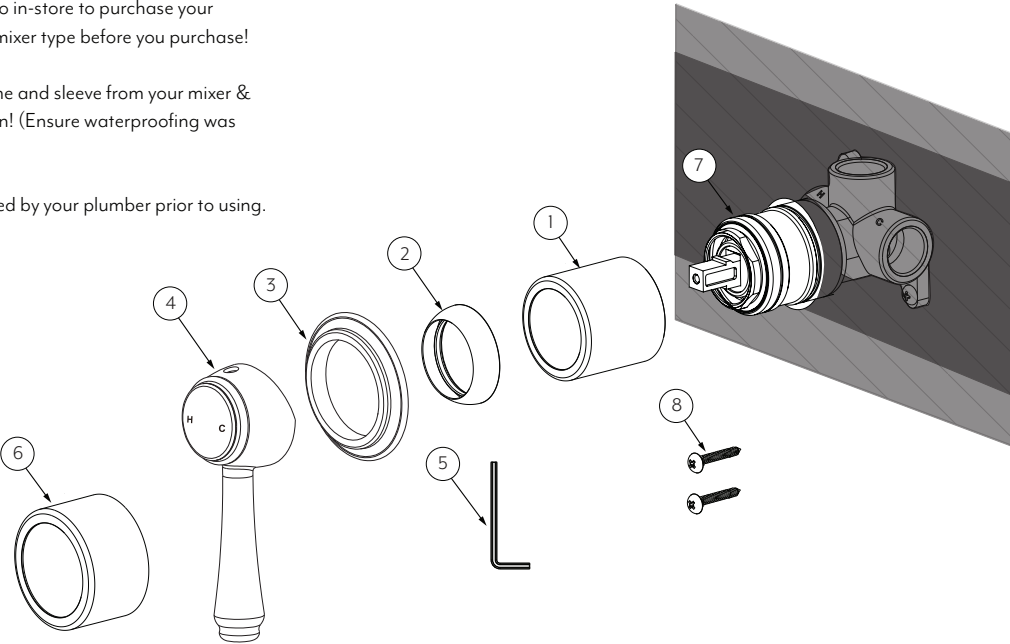
### WHAT'S IN THE BOX EXPLODED VIEW

#### HANDLE KIT (BOX 1)

- Long Sleeve
- Dome
- Back Plate
- Handle
- Allen Key
- Short Sleeve

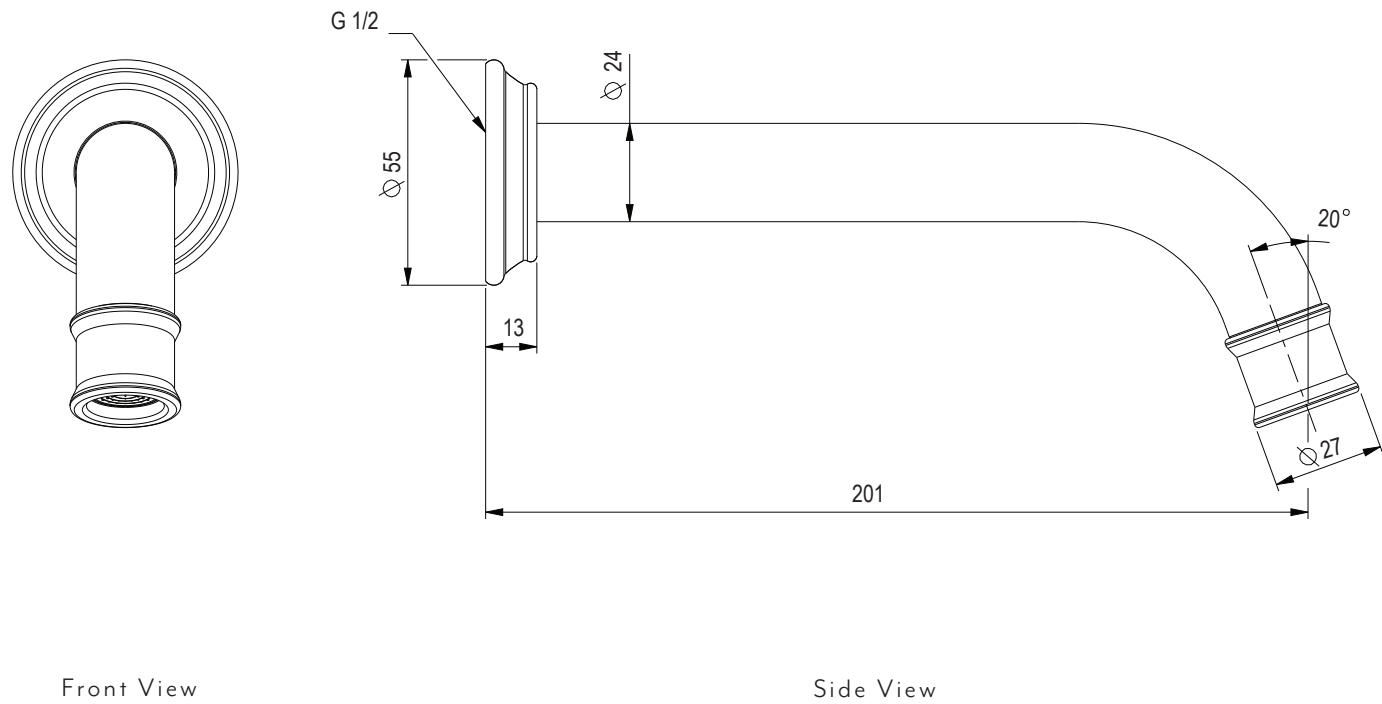
#### IN-WALL (BOX 2)

- Wall Mixer
- Fixing Screws [x2]





# KINGSLEY WALL MOUNTED SPOUT (PROVINCIAL)



**Note:** Dimensions are nominal measurements only

## SPECIFICATIONS

### RECOMMENDED USE

Domestic

### CONSTRUCTION

Solid Brass

### TEMPERATURE RATING

Maximum continuous working temperature 75°C  
If the water temperature exceeds 75°C, an approved tempering valve must be fitted

### PRESSURE RATING

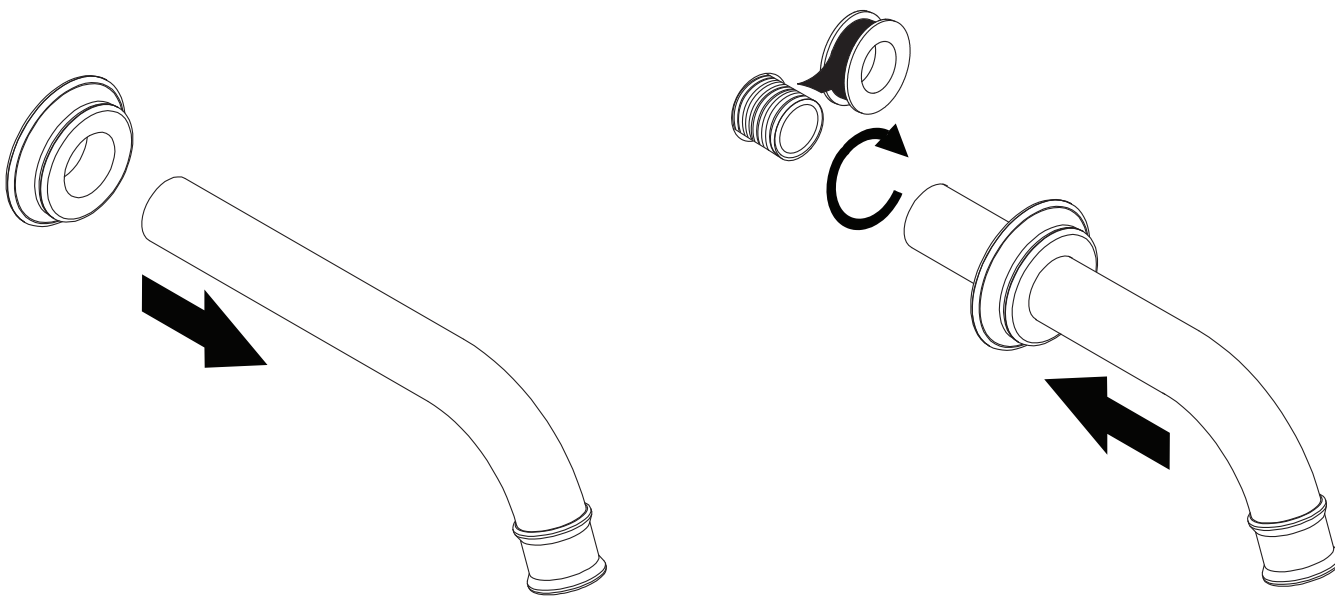
Recommended minimum working pressure 0.2 Bar  
Recommended maximum working pressure 5 Bar  
Hot and cold water inlet pressure should be equal

Disclaimer: Products in this specification manual must by regulation be installed by licensed and registered trade people. The manufacturer/distributor reserves the right to vary specifications or delete models from their range without prior notification. Dimensions are nominal measurements only. Dimensions and set-outs listed are correct at time of publication however the manufacturer/distributor takes no responsibility for printing errors. All ABI Products are designed in Australia. Copyright ABI Interiors 2019.

## INSTALLATION GUIDE

**Note:** This product must be installed by a licensed plumber. This is a general installation guide - there are many factors that are involved that can alter the installation method. For installs outside Australia and New Zealand, the standards in your respective country must be adhered to by your licensed tradesperson.

- 1 Slide back plate onto spout. Ensure o ring is firmly gripping the spout and creating a tight seal.
- 2 Apply the teflon tape to the brass nipple. Twist the spout on and hand tighten. Push back plate to the wall surface.



High Pressure

Low Pressure

Unscrew spout tip to change aerator for alternative pressure option.

**Note:** Refer to AUS to UK adaptor Installation instructions.

WHAT'S IN THE BOX

1x Back plate

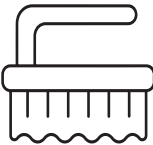
1x Spout



Regularly clean with mild liquid detergent or soap and water



DO NOT use cream cleaners or bleach. These substances are abrasive



DO NOT use cleaning pads with abrasive surfaces as this may scratch the material