



Note: This product must be installed by a licensed tradesperson.

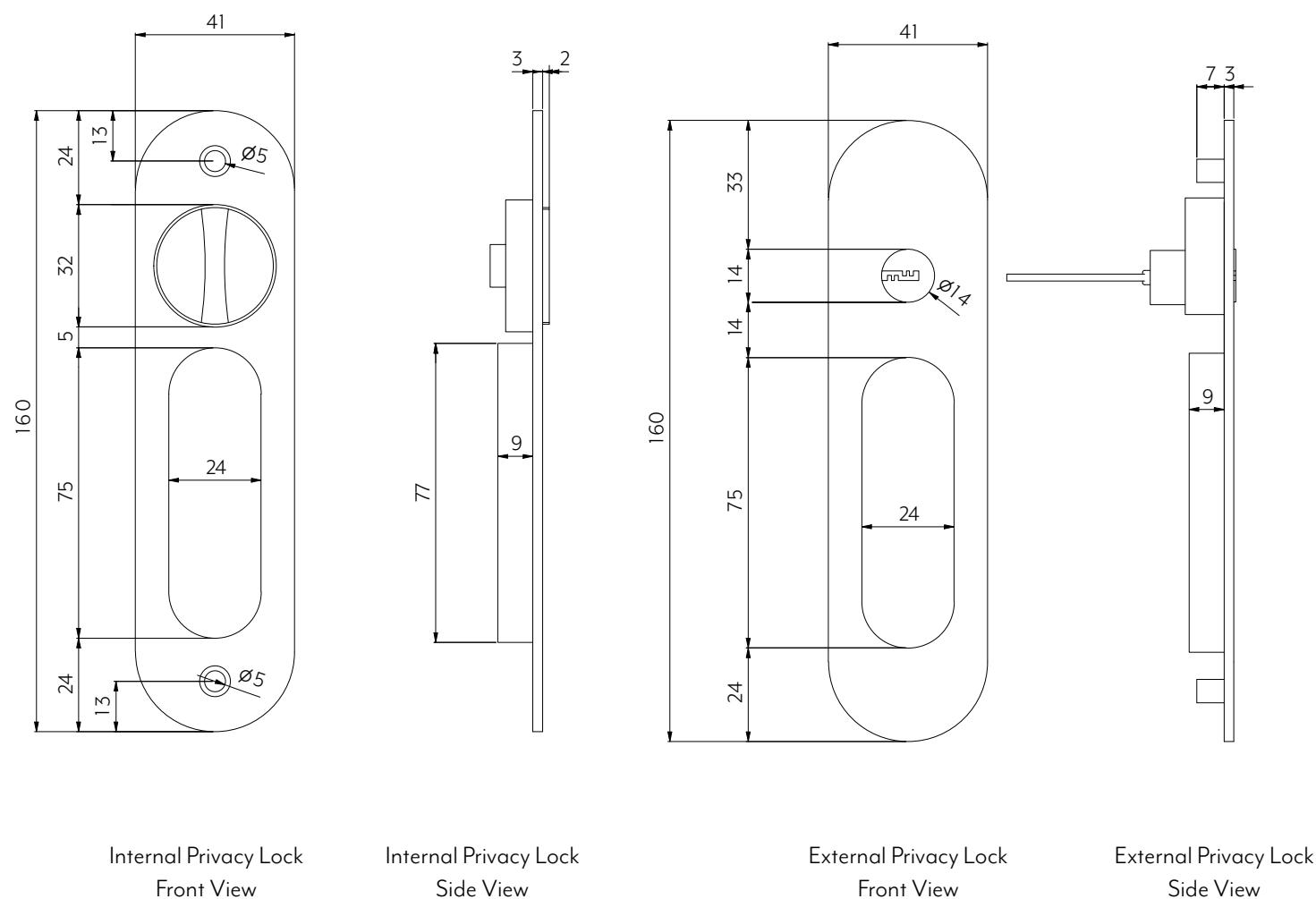
This is a general installation guide - there are many factors

that are involved that can alter the installation method.

This product install must comply with the standards in your

respective country and must be adhered to by your licensed tradesperson.

DOOR CUTTING GUIDE



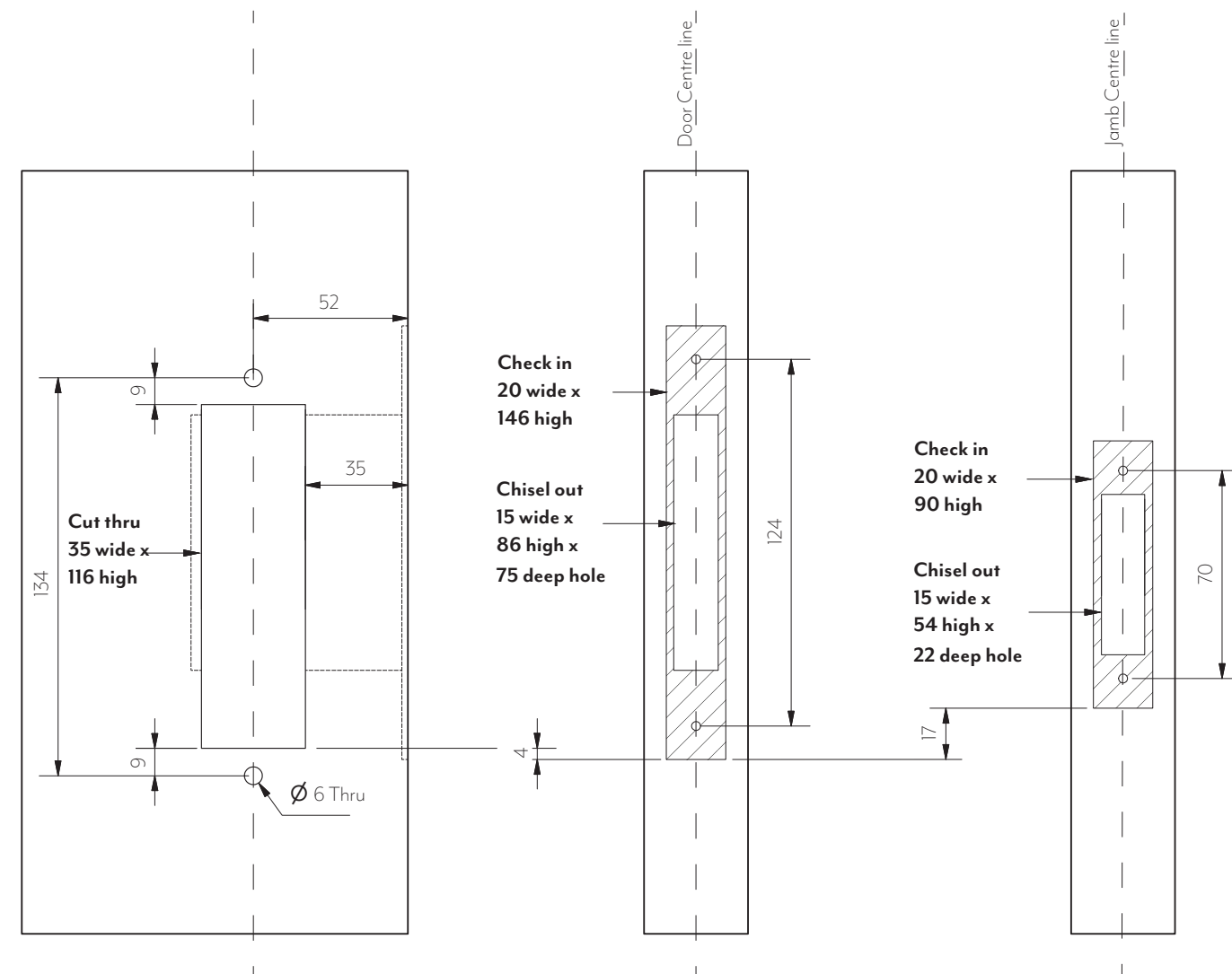
Compatible with 30 - 60mm doors (install dependent)

Note: Dimensions are nominal measurements only

SPECIFICATIONS

RECOMMENDED USE	Domestic / Commercial
MATERIAL	304 Stainless Steel
FUNCTION	Lock
DIMENSION	160mm x 41mm

Disclaimer: Products in this specification manual must by regulation be installed by licensed and registered trade people. The manufacturer/distributor reserves the right to vary specifications or delete models from their range without prior notification. Dimensions are nominal measurements only. Dimensions and set-outs listed are correct at time of publication however the manufacturer/distributor takes no responsibility for printing errors. All ABI Products are designed in Australia. Copyright ABI Interiors Pty Ltd 2021.



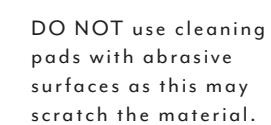
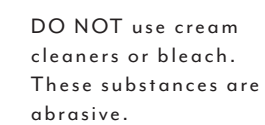
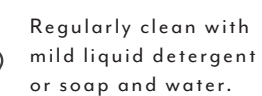
Front View

Door Cutting Guide

Side View

Door Cutting Guide

Jamb Cutting Guide

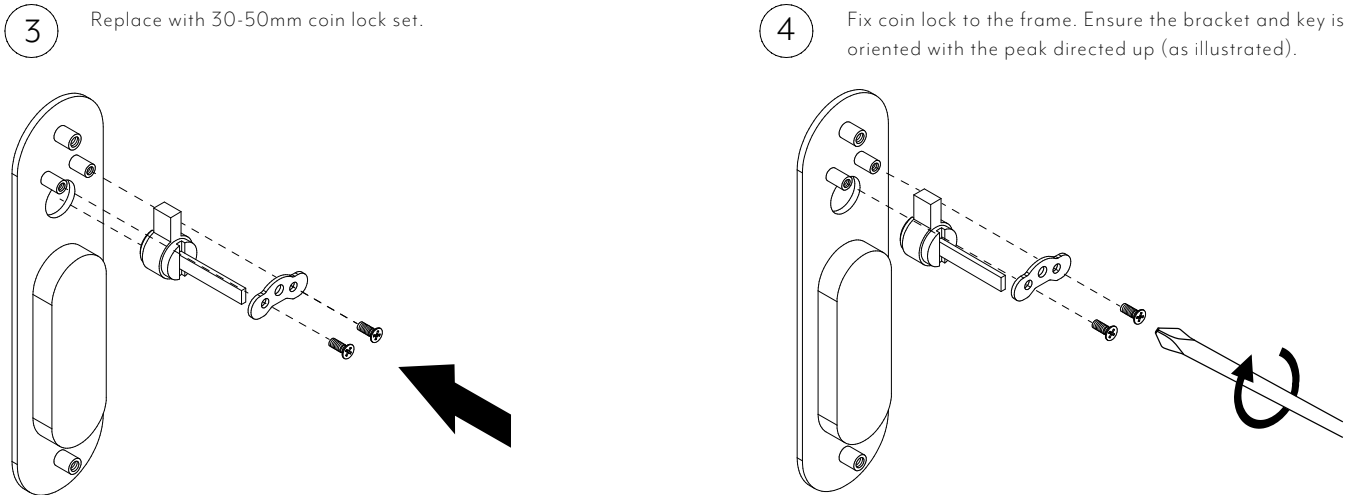
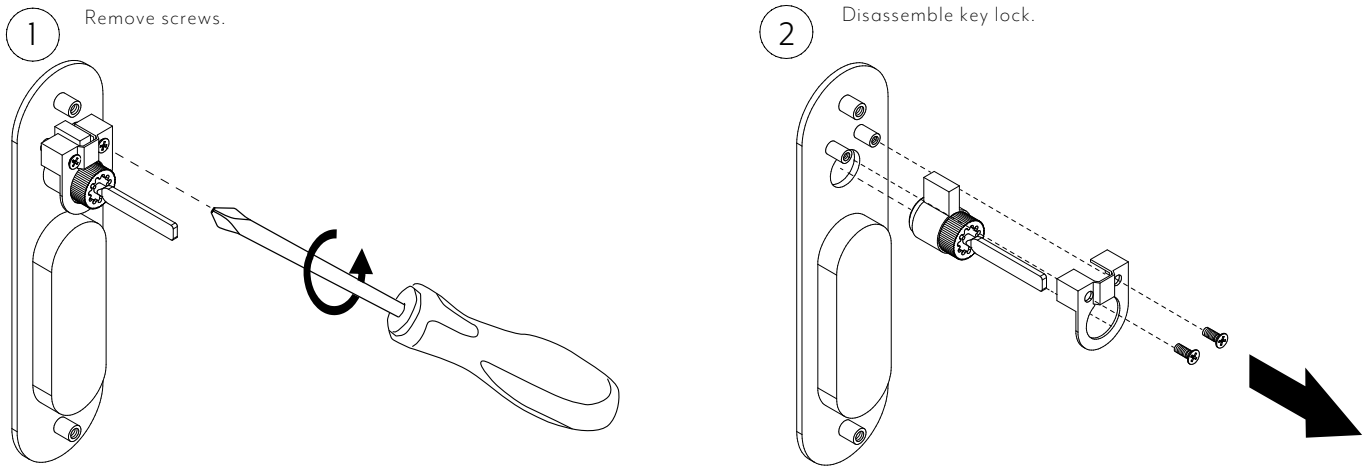


INSTALLATION GUIDE

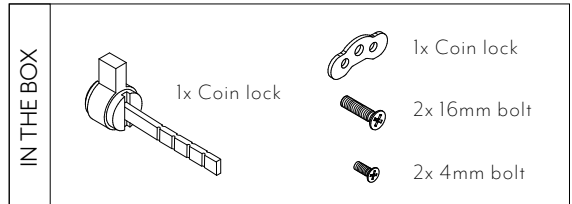
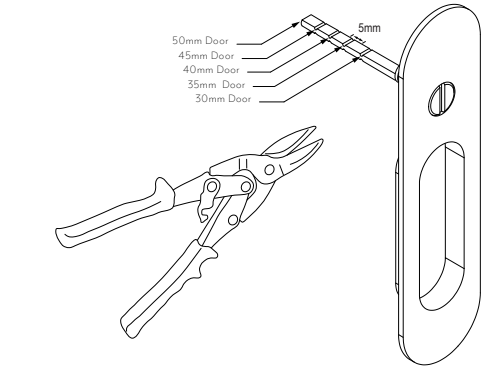
Note: This product must be installed by a licensed tradesperson.
This is a general installation guide - there are many factors that are involved that can alter the installation method.
This product install must comply with the standards in your respective country and must be adhered to by your licensed tradesperson.



COIN LOCK INSTALLATION GUIDE



5 Adjust coin lock extension by cutting with tin snips or hacksaw to suit door thickness. (suits 30 - 50 mm doors)



Regularly clean with mild liquid detergent or soap and water.

DO NOT use cream cleaners or bleach. These substances are abrasive.

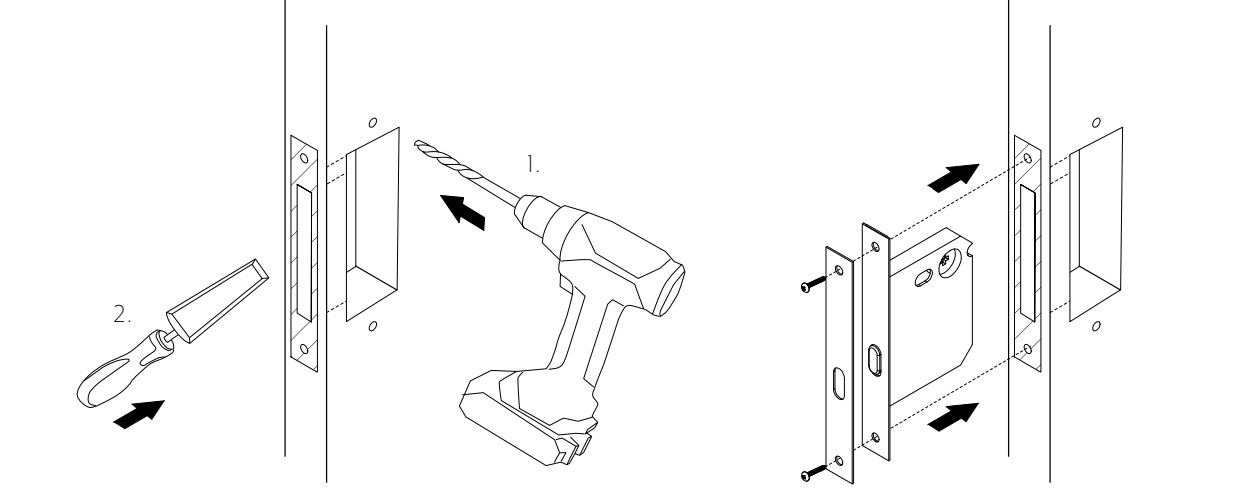
DO NOT use cleaning pads with abrasive surfaces as this may scratch the material.

INSTALLATION GUIDE

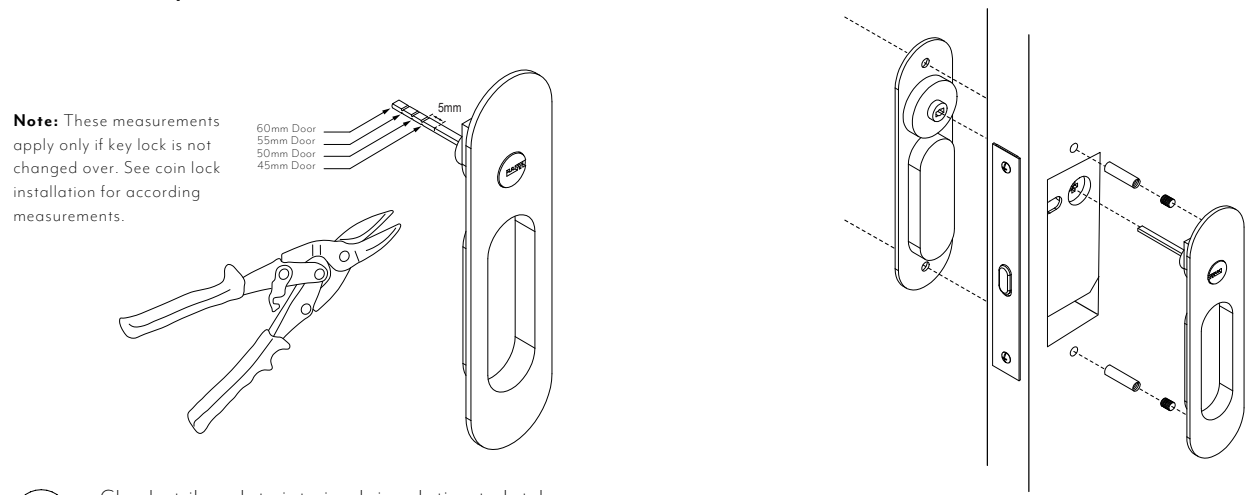
Note: This product must be installed by a licensed tradesperson.
This is a general installation guide - there are many factors that are involved that can alter the installation method.
This product install must comply with the standards in your respective country and must be adhered to by your licensed tradesperson.



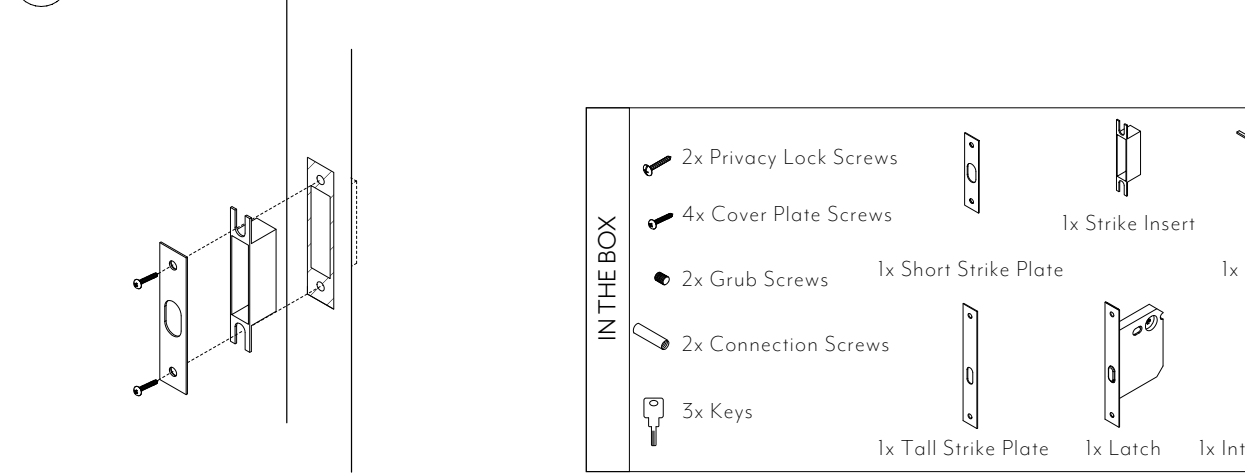
- 1 1. Drill prescribed holes/ recess into door face as per door cutting guide.
- 2 2.Chisel out and check in prescribed sections into door as per cutting guide.



- 3 Adjust key lock extension by cutting with tin snips or hacksaw to suit door thickness (this product is designed for 45-60mm doors, please ensure door thickness is suitable).
- 4 Fix front and back panels to latch.



- 5 Check striker plate into jamb in relation to latch.



Regularly clean with mild liquid detergent or soap and water.

DO NOT use cream cleaners or bleach. These substances are abrasive.

DO NOT use cleaning pads with abrasive surfaces as this may scratch the material.

IN THE BOX	2x Privacy Lock Screws	1x Strike Insert	1x Key Lock
	4x Cover Plate Screws	1x Short Strike Plate	
	2x Grub Screws	1x Tall Strike Plate	1x Latch
	2x Connection Screws		1x Internal Lock
	3x Keys		