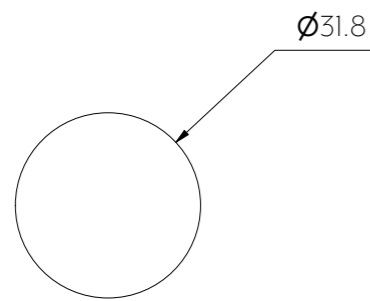
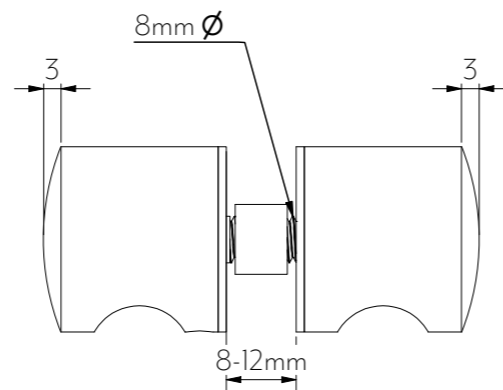


Top View



Front View



Side View

Note: Dimensions are nominal measurements only

SPECIFICATIONS

RECOMMENDED USE

Domestic / Commercial

MATERIAL

304 Stainless Steel

INSTALLATION

8-12mm Glass Thickness (12mm hole required)

SCREW/BOLT TYPE

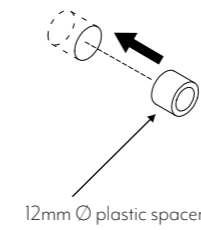
M8x1.25mm fixing bolt

Disclaimer: Products in this specification manual must by regulation be installed by licensed and registered trade people. The manufacturer/distributor reserves the right to vary specifications or delete models from their range without prior notification. Dimensions are nominal measurements only. Dimensions and set-outs listed are correct at time of publication however the manufacturer/distributor takes no responsibility for printing errors. All ABI Products are designed in Australia. Copyright ABI Interiors Pty Ltd 2021.

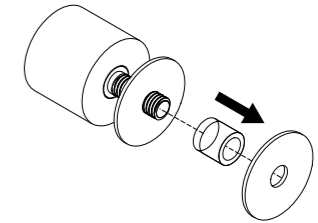
INSTALLATION GUIDE

Note: This product must be installed by a licensed tradesperson. This is a general installation guide - there are many factors that are involved that can alter the installation method. This product install must comply with AS/NZS 3500.

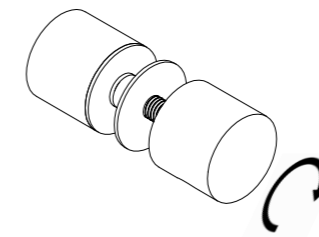
- 1 Drill 12mm diameter hole in desired position of shower screen and insert nylon spacer into drilled hole.



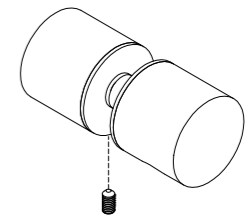
- 2 Insert threaded bolt of rear handle through glass panel with a nylon washer on each side.



- 3 Attach the front handle by screwing onto threaded bolt from front side of glass. Tighten by hand until secure.



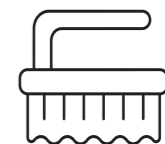
- 4 If required, alignment of rear and front handle can be achieved by loosening grub screw in rear handle and adjusting rotation.



Clean with mild liquid detergent or soap and water



DO NOT use cream cleaners or bleach. These substances are abrasive



DO NOT use cleaning pads with abrasive surfaces as this may scratch the material