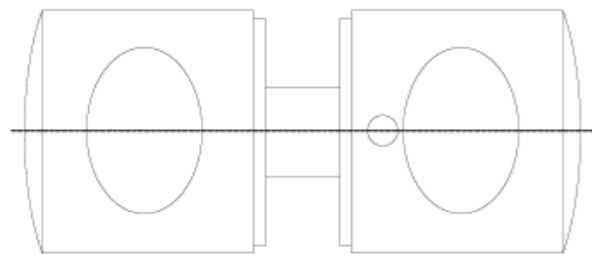
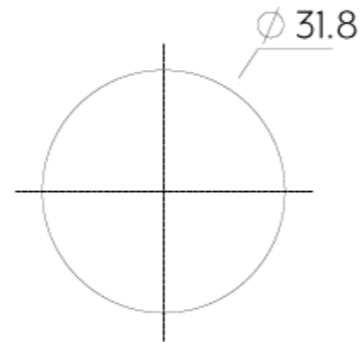
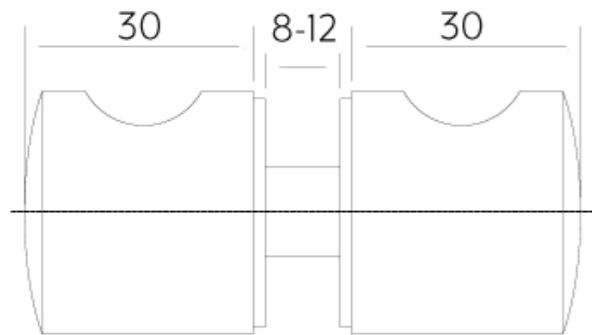




LIVIO SHOWER DOOR HANDLE



Note: Dimensions are nominal measurements only

SPECIFICATIONS

RECOMMENDED USE

Domestic / Commercial

MATERIAL

304 Stainless Steel

INSTALLATION

8-12mm Glass Thickness (12mm hole required)

WARRANTY

Residential - Structure: 10 Years | Finish: 5 Year

Disclaimer: Products in this specification manual must by regulation be installed by licensed and registered trade people. The manufacturer/distributor reserves the right to vary specifications or delete models from their range without prior notification. Dimensions are nominal measurements only. Dimensions and set-outs listed are correct at time of publication however the manufacturer/distributor takes no responsibility for printing errors. All ABI Products are designed in Australia. Copyright ABI Interiors Pty Ltd 2021.

INSTALLATION GUIDE

Note: This product must be installed by a licensed trade
This is a general installation guide - there are many factors that are involved that can alter the installation method.

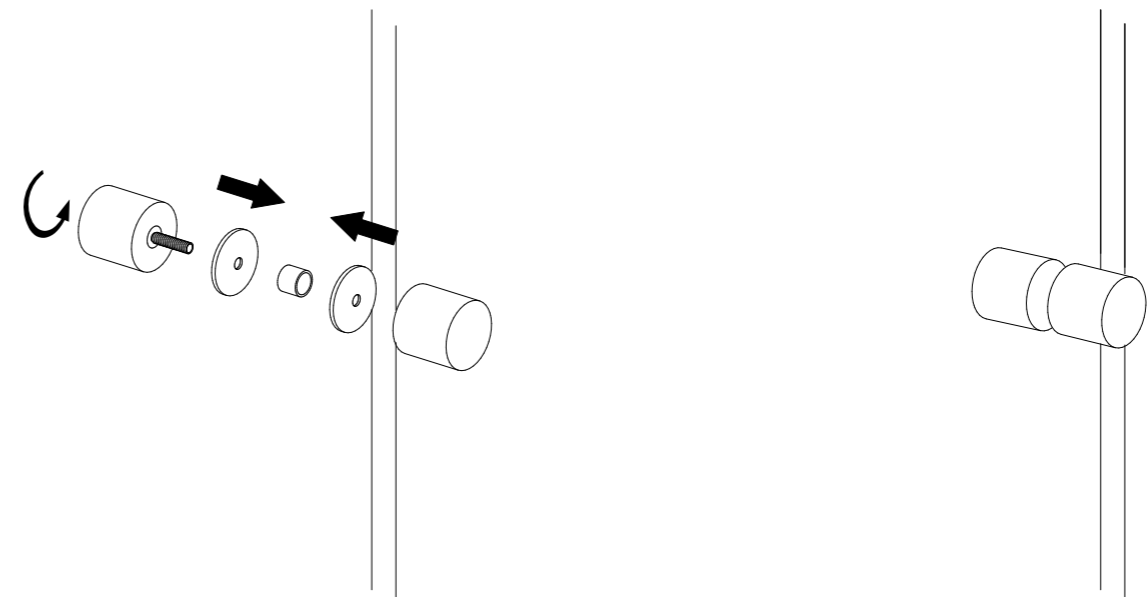
1 Drill hole in desired position of shower screen

2 Fix plastic washer into hole



3 Feed threaded bolt of inner handle through plastic washers and hole in glass to align with the outer handle thread

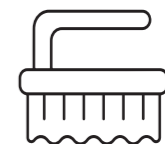
Screw the two components together until securely tightened



Clean with mild liquid detergent or soap and water



DO NOT use cream cleaners or bleach. These substances are abrasive



DO NOT use cleaning pads with abrasive surfaces as this may scratch the material