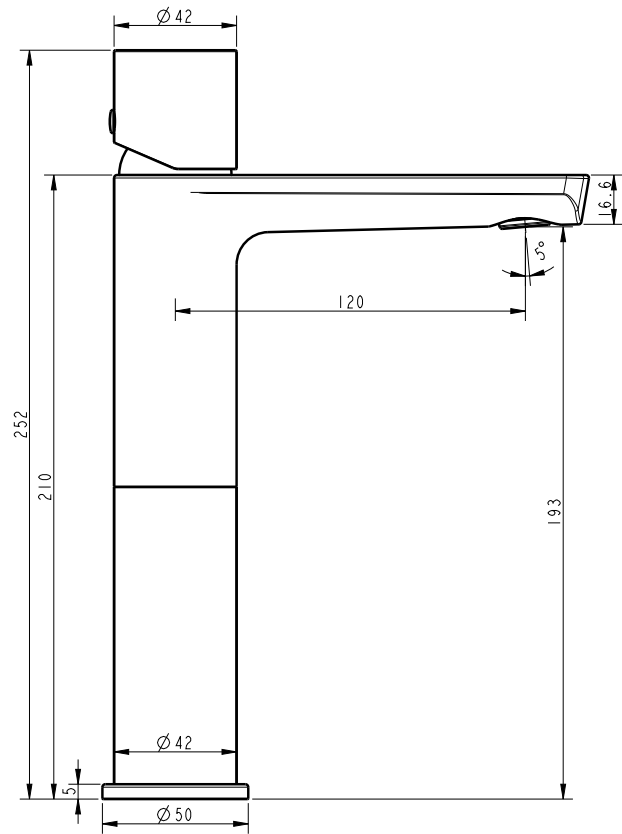




MILANI EXTENDED MIXER



Note: Dimensions are nominal measurements only

SPECIFICATIONS

RECOMMENDED USE

Domestic

PRESSURE RATING

Maximum continuous operating pressure 10 Bar. For best performance and longer life we recommend 0.2-5 Bar.
Hot and cold water inlet pressure should be equal.

TEMPERATURE RATING

Maximum continuous working temperature 80°C

SUITABLE HOT WATER UNITS

Storage tank: Yes
Continuous Flow: Yes
Gravity Feed: Suitable

WATER EFFICIENCY

Nominal Flow Rate(4.78 L/M)
WRAS approved

WARRANTY

Structure: 25 years | Finish: 5 years | Cartridge: 10 years

Disclaimer: Products in this specification manual must by regulation be installed by licensed and registered trade people. The manufacturer/distributor reserves the right to vary specifications or delete models from their range without prior notification. Dimensions are nominal measurements only. Dimensions and set-outs listed are correct at time of publication however the manufacturer/distributor takes no responsibility for printing errors. All ABI Products are designed in Australia. Copyright ABI Interiors 2019.

INSTALLATION MANUAL

This product must be installed by a qualified plumber.

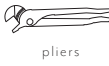
Installation should comply with relevant local authority requirements.

- Maximum hot water temperature 75°C.
- Recommended minimum working pressure 150kpa.
- Recommended maximum working pressure 500kpa.

TOOLS YOU WILL NEED



plumbers putty



pliers



adjustable wrench

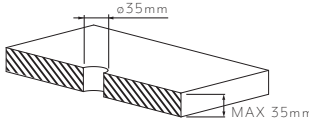


phillips screwdriver

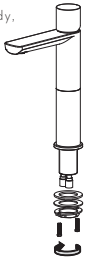


allen key

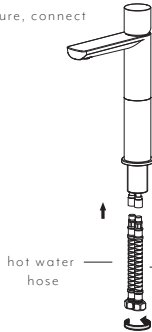
- 1 The hole dimension should be 35mm



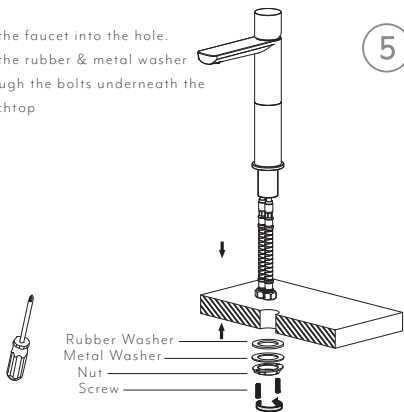
- 2 Fix the bolts to the bottom of the body, tighten it using a screwdriver



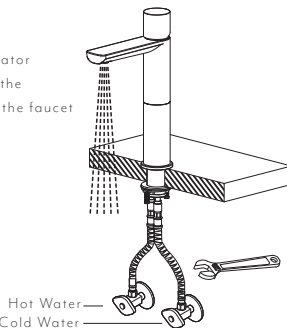
- 3 As shown in the figure, connect the flexible hoses



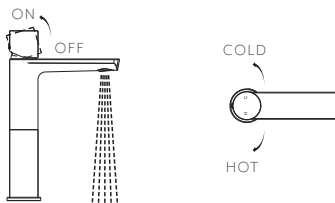
- 4 Put the faucet into the hole. Put the rubber & metal washer through the bolts underneath the benchtop



- 5 Attach the two flexible hoses to water supply. Take the aerator out from the spout and flush the faucet. Install the aerator to the faucet after flushing



- 6 MIXER OPERATION



EXPLODED VIEW

Item Description Code

- 1 Cap
- 2 Grub Screw
- 3 Handle
- 4 Dome
- 5 Locking nut
- 6 Cartridge
- 7 Body
- 8-9 Aerator
- 10 Base Plate
- 11-16 Connection & Fittings
- 17 Rubber rings
- 18 Hose
- 19-20 Flexi Hose

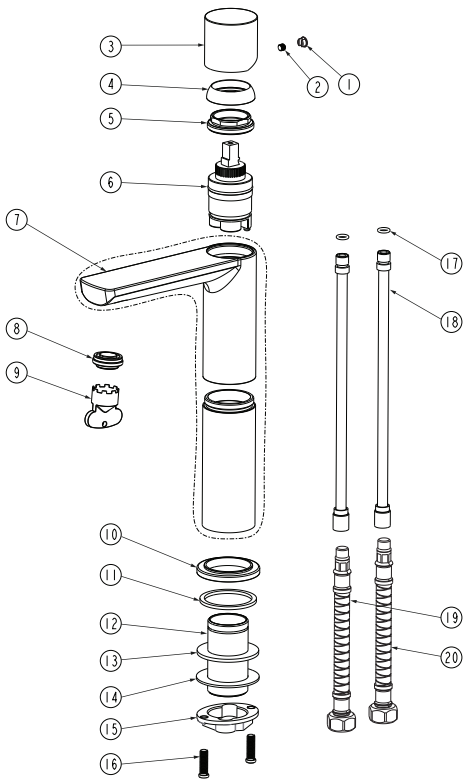
High Pressure



Low Pressure



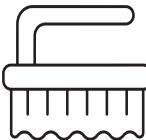
Unscrew spout tip to change aerator for alternative pressure option.



Regularly clean with mild liquid detergent or soap and water



DO NOT use cream cleaners or bleach. These substances are abrasive



DO NOT use cleaning pads with abrasive surfaces as this may scratch the material