

Note: Dimensions are nominal measurements only

SPECIFICATIONS

RECOMMENDED USE

Domestic

MATERIAL

Solid Brass

PRESSURE RATING

Maximum continuous operating pressure 1000kPa.W.
For best performance and longer life we recommend 150-500kPa.
Hot and cold water inlet pressure should be equal.

TEMPERATURE RATING

Maximum continuous working temperature 80°C

SUITABLE HOT WATER UNITS

Storage tank: Yes
Continuous Flow: Yes
Gravity Feed: Not suitable

STANDARDS

WELS 5 Star, 5L/min, T36893

INSTALLATION GUIDE

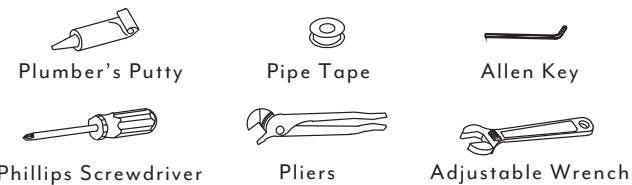
Note: This product must be installed by a licensed plumber.

This is a general installation guide - there are many factors that are involved that can alter the installation method. This product install must comply with AS/NZS 3500.

Note: Flow Restrictor to be installed when using this product over a basin.

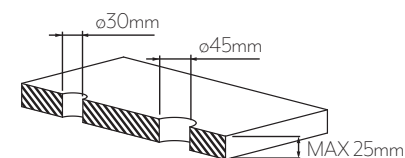
Flow restrictors are provided with the spout.

WHAT YOU WILL NEED:



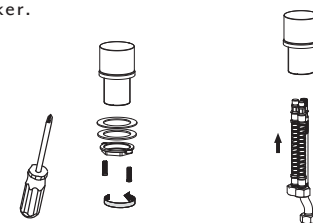
1

Cut a 30mm diameter hole for the hob spout and 45mm for the mixer.



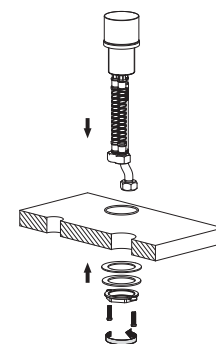
2

Disassemble the fixing bracket from the Hob mixer. Install flexible hoses, making note of the red and blue marker.



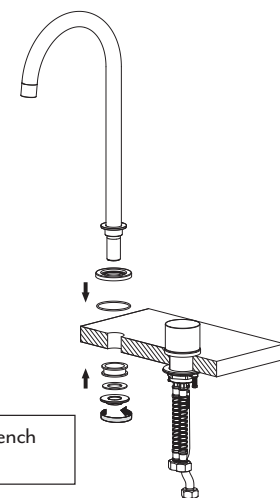
3

Install mixer through pre-cut hole onto benchtop. Insert bolts through plastic and metal washer on underside of benchtop to fix mixer in place.



4

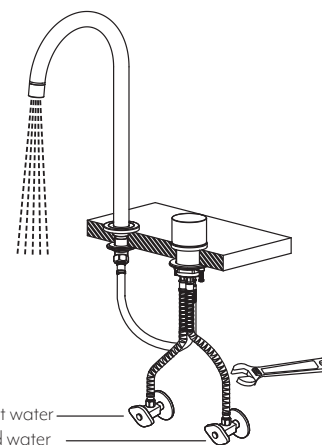
Install the spout through the base plate and pre-cut hole onto benchtop. Fix the spout in place using plastic and metal washer on the underside of benchtop.



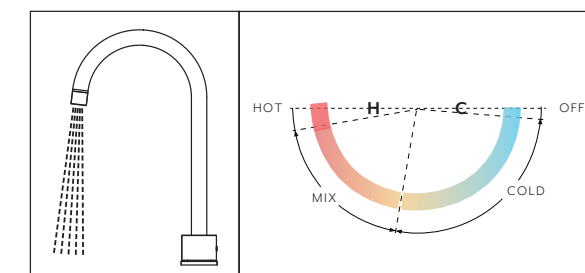
Brass spacer not required for bench thickness greater than 10mm.

5

Attach spout to mixer using flexible hose. Attach two flexible hoses to Hot & Cold water supply. Take the aerator apart from the spout and flush the faucet. Install the aerator to the faucet after flushing.



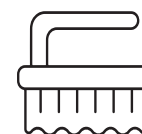
MIXER OPERATION



Regularly clean with mild liquid detergent or soap and water



DO NOT use cream cleaners or bleach. These substances are abrasive



DO NOT use cleaning pads with abrasive surfaces as this may scratch the material