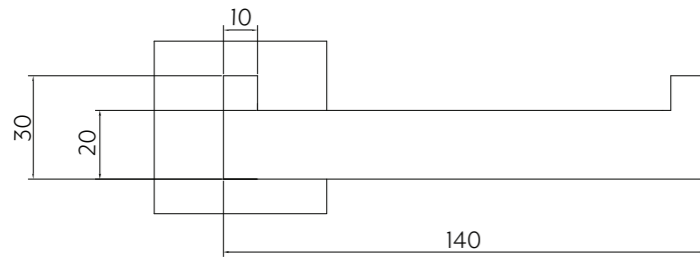
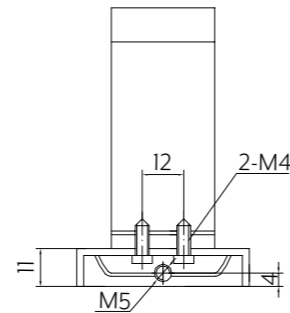
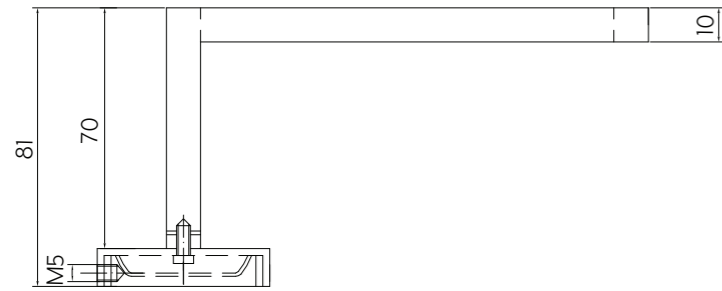
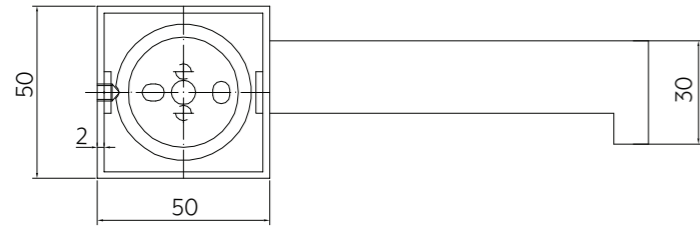




# VAADA TOILET ROLL HOLDER



**Note:** Dimensions are nominal measurements only

## SPECIFICATIONS

### RECOMMENDED USE

Domestic

### MATERIAL

Stainless Steel

### WARRANTY

Structure: 10 years | Finish: 5 years

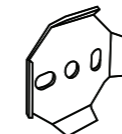
Disclaimer: Products in this specification manual must by regulation be installed by licensed and registered trade people. The manufacturer/distributor reserves the right to vary specifications or delete models from their range without prior notification. Dimensions are nominal measurements only. Dimensions and set-outs listed are correct at time of publication however the manufacturer/distributor takes no responsibility for printing errors. All ABI Products are designed in Australia. Copyright ABI Interiors Pty Ltd 2021.



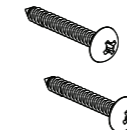
# VAADA TOILET ROLL HOLDER

## INSTALLATION MANUAL

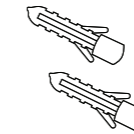
### IN THE BOX



Wall Bracket



Fixing Screws



Wall Plugs



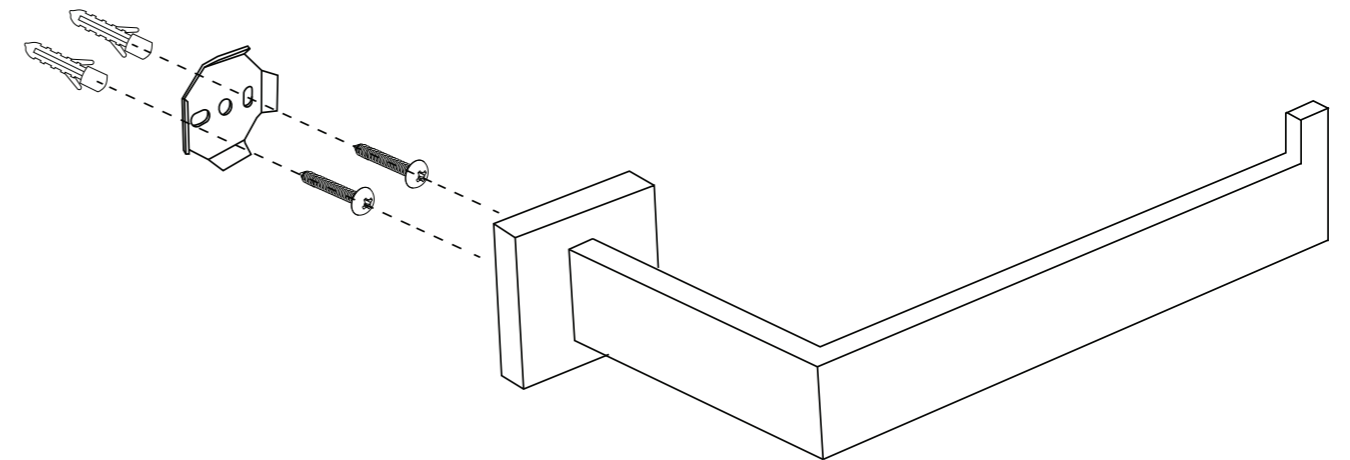
Allen Key

**STEP ONE:** Drill holes in desired position and insert wall plugs

**STEP TWO:** Remove brackets from the Toilet Roll Holder using the allen key to loosen the grub screw. Install brackets by fastening the supplied screws into the wall plugs

**STEP THREE:** Place the Toilet Roll Holder onto the bracket and firmly tighten grub screw using allen key

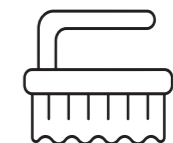
**IMPORTANT** - If installing onto plasterboard please use appropriate fixings



Regularly clean with mild liquid detergent or soap and water



DO NOT use cream cleaners or bleach. These substances are abrasive



DO NOT use cleaning pads with abrasive surfaces as this may scratch the material