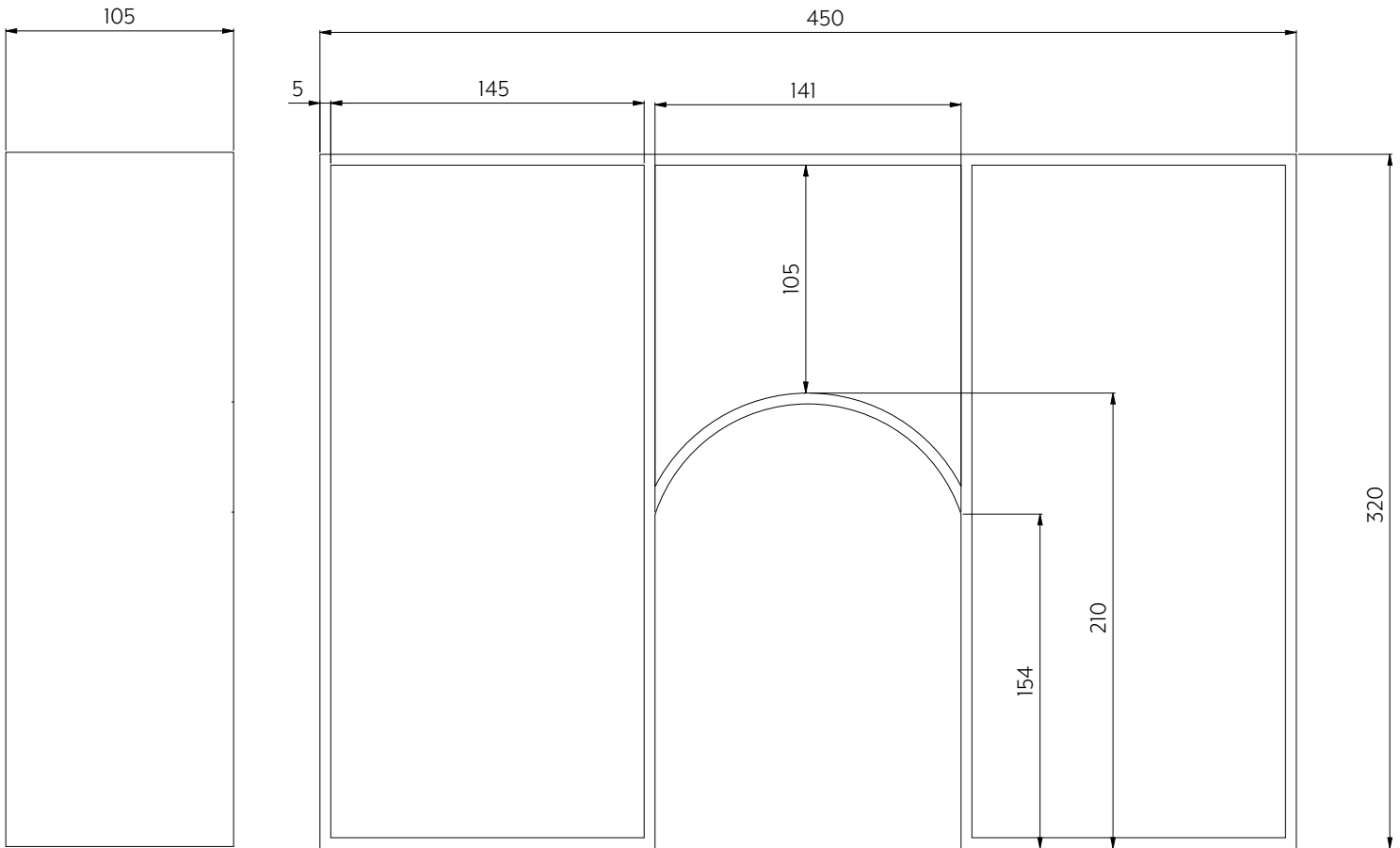




# VANITY DRAWER ORGANISER 600MM

\*WITH CUT OUT



Side View

Top View

**Note:** Dimensions are nominal measurements only

## SPECIFICATIONS

### RECOMMENDED USE

Suitable for 600mm cut out drawer

### MATERIAL

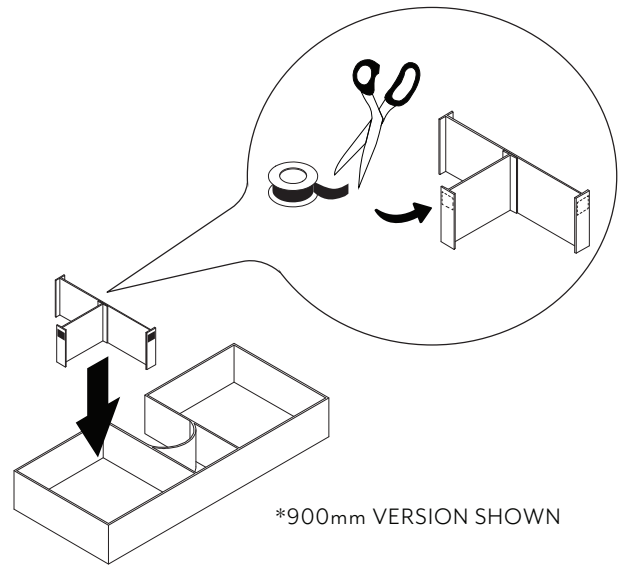
Acrylic

# INSTALLATION GUIDE

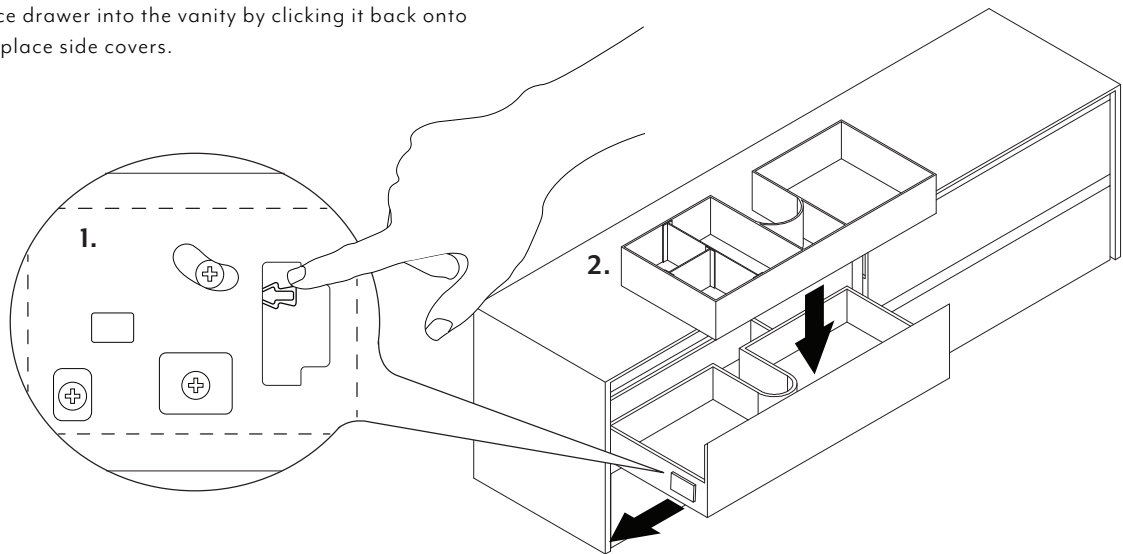


**Note:** This product must be installed by a licensed tradesperson.  
This is a general installation guide - there are many factors that are involved that can alter the installation method.

- 1 Insert dividers into organizer in your desired configuration.  
If desired place adhesive strips onto sides of divider. To ensure easy insertion, place a small amount of adhesive on to top quarter of the divider.



- 2 1. Remove vanity drawer. This can be done by removing side covers and pulling the concealed levers simultaneously to slide drawer off tracks.  
2. Place organizer into drawer.  
3. Replace drawer into the vanity by clicking it back onto track. Replace side covers.



- 3 Close vanity drawer to test and enjoy organizing!

